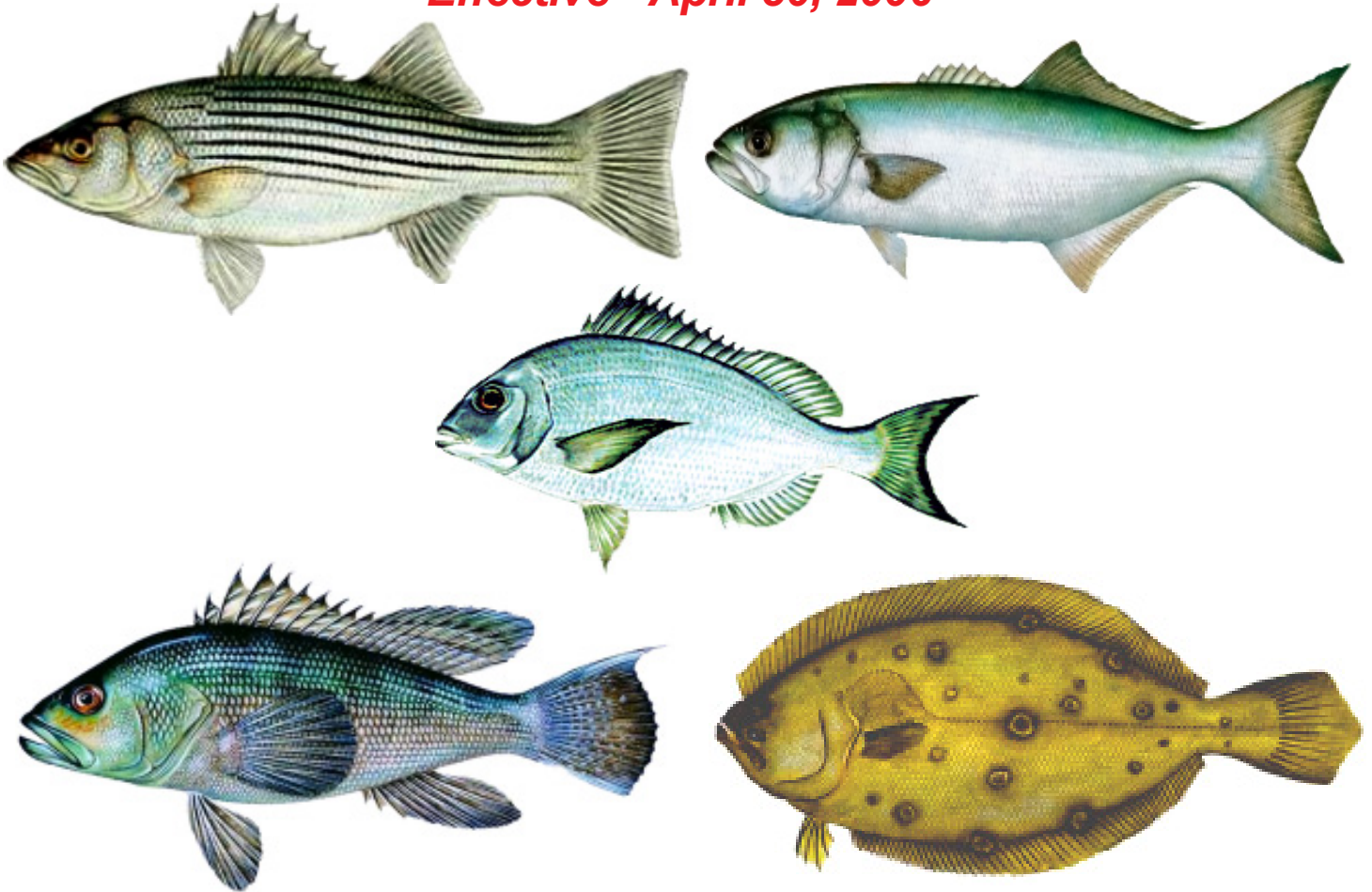


CONNECTICUT **2006** MARINE FISHING REGULATIONS

Effective - April 30, 2006



Includes Regulation Changes for:

SCUP (PORGY)

SUMMER FLOUNDER

BLACK SEA BASS

*These changes have occurred since
publication of the 2006 Angler's Guide*

Fishing Violations - 1.800.842.4357



State of Connecticut
Department of
Environmental Protection
Bureau of Natural Resources

Marine Fisheries Division

MARINE RECREATIONAL

FISHING REGULATIONS

 REGULATIONS FOR CERTAIN SPECIES HAVE CHANGED IN **2006!**



STRIPED BASS

Minimum Size: **28 inches.**

Daily Creel Limit: **2 fish per angler.**

Open Season: Year Round.

Special Note: No spearing or gaffing. Head and tail have to remain intact and fish must not be made unidentifiable.



BLUEFISH

Minimum Size: **None.**

Daily Creel Limit: **10 fish per angler.**

(including snapper bluefish).

Open Season: Year Round.



TAUTOG (BLACKFISH)

Minimum Size: **14 inches.**

Daily Creel Limit: **4 fish per angler.**

Open Season: **Jan. 1 - April 30, June 15 - Sept. 7 and Sept. 22 - Dec. 13.**

Closed: May 1 - June 14, Sept. 8 - Sept. 21 and Dec. 14 - Dec. 31.



Regulations have changed in 2006!

SCUP (PORGY)

Minimum Size: **10-1/2 inches.**

Daily Creel Limit: **25 fish per angler.**

Party/Charter: 25 fish per Angler, June 1- Aug. 31 and 60 fish per Angler, Sept. 1 - Oct. 31.

Open Season: **June 1 - Oct. 31.**

Closed: Nov. 1 - May 31.



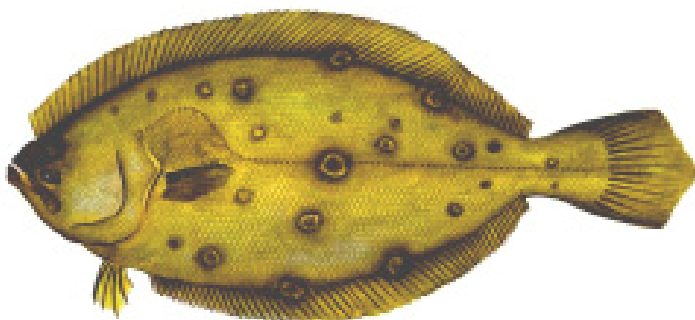
WINTER FLOUNDER

Minimum Size: **12 inches.**

Daily Creel Limit: **10 fish per angler.**

Open Season: **April 1 - May 30.**

Closed: May 31 - March 31.



Regulations have changed in 2006!

SUMMER FLOUNDER (FLUKE)

Minimum Size: **18 inches.**

Daily Creel Limit: **6 fish per angler.**

Open Season: **April 30 - Dec. 31.**

Closed: Jan. 1 - Apr. 29.

Special Note: On the water, fillets must meet minimum length or be accompanied by legal sized rack (carcass).



Regulations have changed in 2006!

BLACK SEA BASS

Minimum Size: **12 inches.**

Daily Creel Limit: **25 fish per angler.**

Open Season: Year Round.

ALL FISH ARE MEASURED FROM TIP OF SNOUT TO END OF TAIL (TOTAL LENGTH).

SPECIES, MINIMUM SIZES, DAILY LIMITS, AND FISHING SEASONS

Marine Fisheries Division 860.434.6043

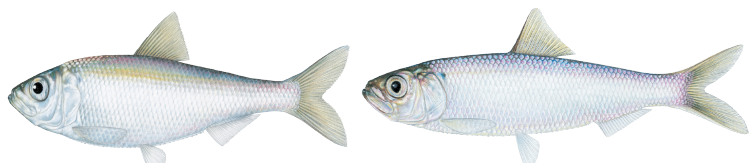


WEAKFISH

Minimum Size: **16 inches.**

Daily Creel Limit: **10 fish per angler.**

Open Season: Year Round.



ALEWIFE / BLUEBACK HERRING

The Taking of Alewife and Blueback Herring is Prohibited!



AMERICAN EEL

Minimum Size: **6 inches.**

Daily Creel Limit: **50 fish per angler.**

Open Season: Year Round.

Special Note: Use of Eel Pots is limited to 2 pots per person, personal use only.



HICKORY SHAD / AMERICAN SHAD

Minimum Size: **None.**

Daily Creel Limit:

6 fish per angler,

(both species in aggregate).

Open Season: Year Round.

Special Note: In the Pawcatuck River, the open season for American Shad follows Rhode Island regulations and the daily limit is 1 fish.



ATLANTIC COD/ HADDOCK

Minimum Size: **Cod 23 inches.**

Haddock 19 inches.

Daily Creel Limit: 10 **Cod** per angler

No Limit on Haddock.

Party/Charter: No Creel Limit

Open Season: Year Round.



POLLOCK

Minimum Size: **19 inches.**

Daily Creel Limit: **None.**

Open Season: Year Round.



SEA-RUN TROUT (Brown, Brook, Rainbow)

Minimum Size: **15 inches.**

Daily Creel Limit: **2 fish per angler,**

(all species in aggregate).

Open Season: Year Round.



WHITE PERCH





Minimum Size: **7 inches.**

Daily Creel Limit: **30 fish per angler.**

Open Season: Year Round.

Report Fishing Violations - 1.800.842.4357

HOW TO CATCH SALTWATER FISH

<i>SPECIES</i>	<i>HABITAT</i>	<i>FISHING METHOD</i>	<i>BAITS and LURES</i>
STRIPED BASS 	Large Rivers In Spring and Fall Estuaries and Bays in Summer	Drifting with Live Bait Jigging and Trolling Bottom Fishing with Live or Dead Bait Casting to Fish	Live Bait; Menhaden, Eels, Shiners and Sand Worms All Types of Swimming & Diving Lures, Bucktail Jigs, Plastic Swimming Baits
HICKORY SHAD 	Estuaries, Bays and Lower Sections of Rivers and Coves	Casting to Fish Drifting with the Tide Anchored Over Structure and Channels	Willowleaf, Shad Dart, Kastmaster and Small Jigs with Plastic Bodies
FLUKE 	Estuaries, Bays and Lower Sections of Rivers Hard Bottom and Channels Preferred	Bottom Fishing Drifting with Bait Jigging up and Down Casting to Fish and Slowly Retrieving Bait/Lure	Live/Dead Bait (Bunker, Herring, Mummichogs, Shiners and Silversides), Cut Squid, Baited Jigs, Rubber Worms, and Plastic Baits
SCUP 	Estuaries and Bays Rock Piles / Reefs Oyster & Mussel Beds Pilings and Jetties	Anchored over Structure Bottom Fishing Fishing with Live or Dead Bait	Squid, Conch, Sand Worms, Shrimp, Night Crawlers Mussels and Clams

 **Reduce Hooking Mortality - Please Use Circle Hooks!**

MARINE VOLUNTEER ANGLER SURVEY PROGRAM

The Marine Fisheries Division is seeking marine recreational anglers who will volunteer to participate in the Connecticut **Volunteer Angler Survey (VAS)**. The **VAS** Program is designed to collect fishing trip and catch information from marine recreational (hook and line) anglers who volunteer to record their angling activities via a logbook. **VAS anglers contribute valuable fisheries-specific information** concerning striped bass, fluke, bluefish, and other important finfish species used in monitoring and assessing fish populations inhabiting Connecticut marine waters.

The **survey logbook is easy to fill out**. Each participating angler is assigned a personal code number for confidentiality. Recording instructions are provided on the inside cover of the logbook. Upon completion, simply tape the pre-postage paid logbook shut and drop it off in the mail. Anglers that send in logbooks are rewarded with a **VAS cooler** and updated results of the program. After all the logbooks are computer entered and error checked, the logbooks are returned to each participant for their own records.

Interested in participating in the survey?

Please contact: Rod MacLeod at 860.434.6043 or
 Department of Environmental Protection
 Marine Fisheries Office
 P.O. Box 719
 Old Lyme, CT 06371

Email: rod.macleod@po.state.ct.us



Please Sign-Up. Thank you.

 Check your local bait & tackle shop or www.ct.gov/dep for updated fishing information.