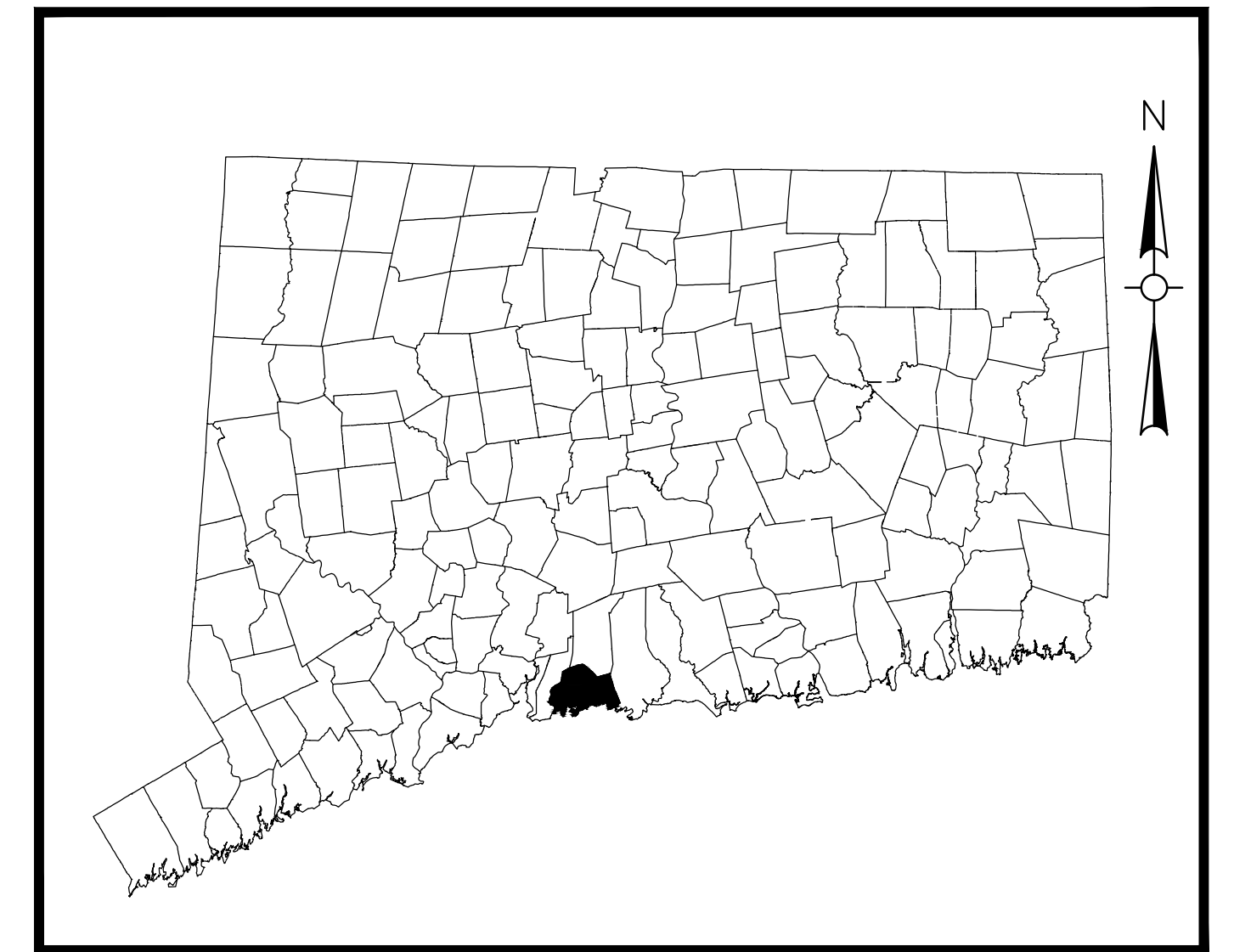


LOCATION MAP
SCALE: 1" = 1000'

TOWN OF BRANFORD MAIN STREET RECONSTRUCTION AND REHABILITATION PROJECT NO. L014-0002

BID SET
DECEMBER 13, 2024



TOWN LOCATION

PROJECT SPECIFICATIONS:
STATE OF CONNECTICUT DEPARTMENT OF
TRANSPORTATION STANDARD SPECIFICATIONS FOR
ROADS, BRIDGES, FACILITIES AND INCIDENTAL
CONSTRUCTION FORM 819 (2024), MERGED WITH ALL
ADDENDUMS FROM SPECIAL PROVISIONS

SURVEY INFORMATION:
TOPOGRAPHIC FIELD SURVEY PERFORMED BY
PEREIRA ENGINEERING, LLC. MAY 2023, SEE SURVEY
NOTES ON SHEET GEN-1

VERTICAL DATUM - NAVD88
HORIZONTAL DATUM - NAD83

DESIGNED BY:
WESTON & SAMPSON ENGINEERS, INC.
712 BROOK STREET, SUITE 103
ROCKY HILL, CT 06067



CT LIC. NO. 30580

Weston & SampsonSM

712 Brook Street, Suite 103, Rocky Hill, CT 06067

860.513.1473

800.SAMPSON

www.westonandsampson.com

SHEET NAME	SHEET TITLE
TITLE	TOWN OF BRANFORD MAIN STREET RECONSTRUCTION AND REHABILITATION
GEN-1	NOTES, LEGENDS, ABBREVIATIONS AND INDEX PLAN
BOR-1 TO BOR-2	BORING LOGS
EX-1 TO EX-4	EXISTING CONDITIONS PLANS
DET-1	SEDIMENT AND EROSION CONTROL DETAILS
DET-2	MISCELLANEOUS DETAILS
DET-3 TO DET-5	CT DOT HIGHWAY GUIDE SHEETS
DET-6 TO DET-11	CT DOT TRAFFIC GUIDE SHEETS
DET-12 TO DET-22	LANDSCAPE DETAILS
TYP-1	TYPICAL SECTION
IGP-1 TO IGP-2	INTERSECTION GRADING PLANS
HWY-1	ROADWAY PLAN AND PROFILE - MAIN STREET STA. 10+90 TO STA. 16+75
HWY-2	ROADWAY PLAN AND PROFILE - MAIN STREET STA. 16+75 TO STA. 22+75
HWY-3	ROADWAY PLAN - MAIN STREET STA. 22+75 TO STA. 28+75
HWY-4	ROADWAY PROFILE - MAIN STREET STA. 22+75 TO STA. 28+75
HWY-5	ROADWAY PLAN AND PROFILE - MAIN STREET STA. 28+75 TO STA. 34+40
SPM-1 TO SPM-2	SIGNING AND PAVEMENT MARKING PLANS
LA-1 TO LA-4	LANDSCAPE IMPROVEMENTS PLANS
LP-1 TO LP-4	PLANTING PLANS
XSC-1 TO XSC-31	CROSS SECTIONS
TCS-1 TO TCS-2	TRAFFIC CONTROL SIGNAL PLANS
EL-1 TO EL-4	ELECTRICAL PLANS
EL-5 TO EL-6	ELECTRICAL DETAILS
	CT DOT HIGHWAY STANDARD DRAWINGS
	CT DOT TRAFFIC STANDARD DRAWINGS



JAMES B. COSGROVE
FIRST SELECTMAN

JOHN M. HOEFFERLE, P.E.
TOWN ENGINEER

MAIN STREET (STA. 10+90 TO 34+40)

MAIN STREET AND ALL SIDE STREETS WITHIN THE PROJECT
LIMITS ARE TO BE MAINTAINED BY THE TOWN OF BRANFORD

PLANS APPROVED BY: _____
TOWN OF BRANFORD - TOWN ENGINEER OR CHIEF ELECTED OFFICIAL



Know what's below.
Call before you dig.

Consultants:

Revisions:

No.	Date	Description

Seal:

COA:

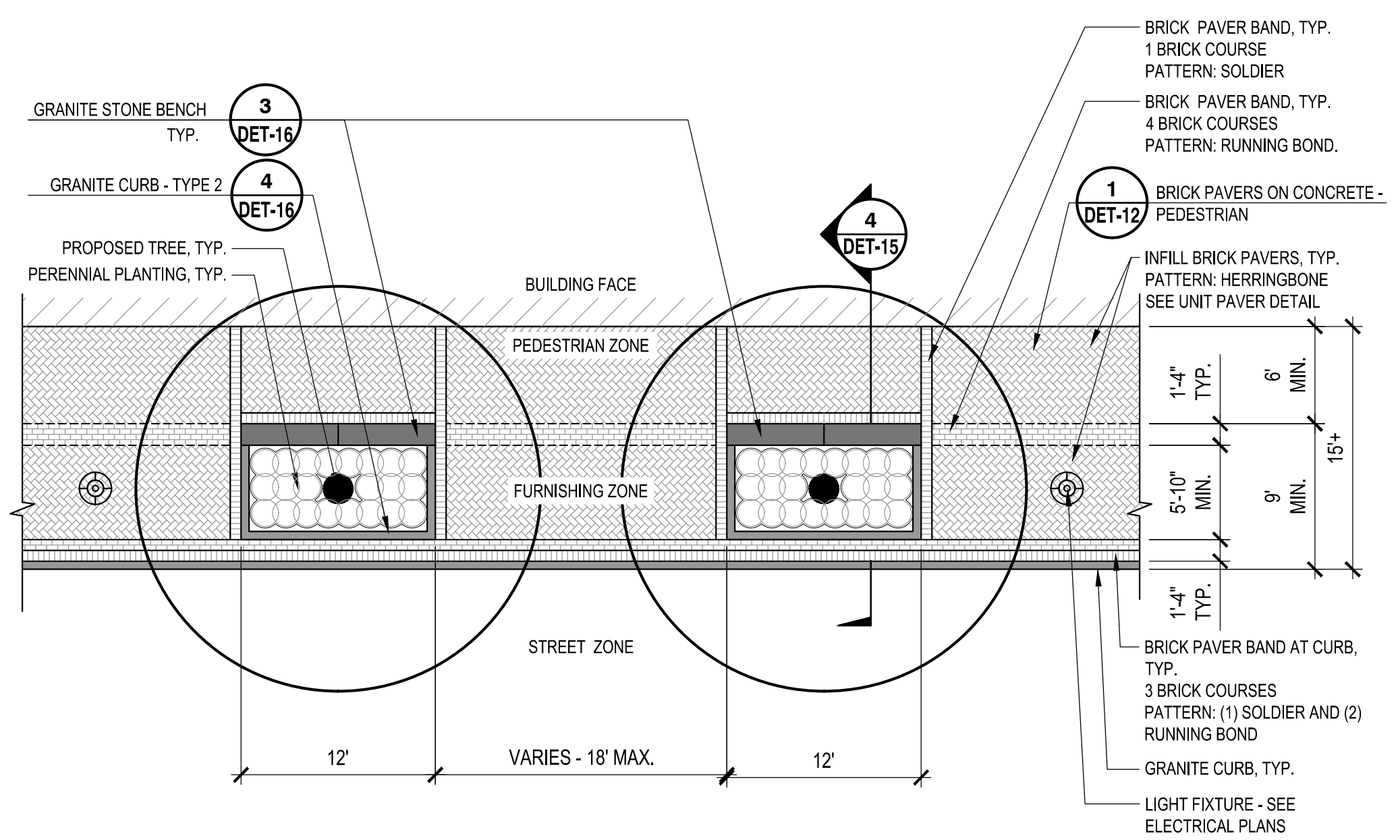
Issued For:
BID SET

Scale: AS NOTED
Date: DECEMBER 13, 2024
Drawn By: JT, JC
Reviewed By: RC
Approved By: MJJ

W&S Project No.: ENG21-0163
W&S File No.:

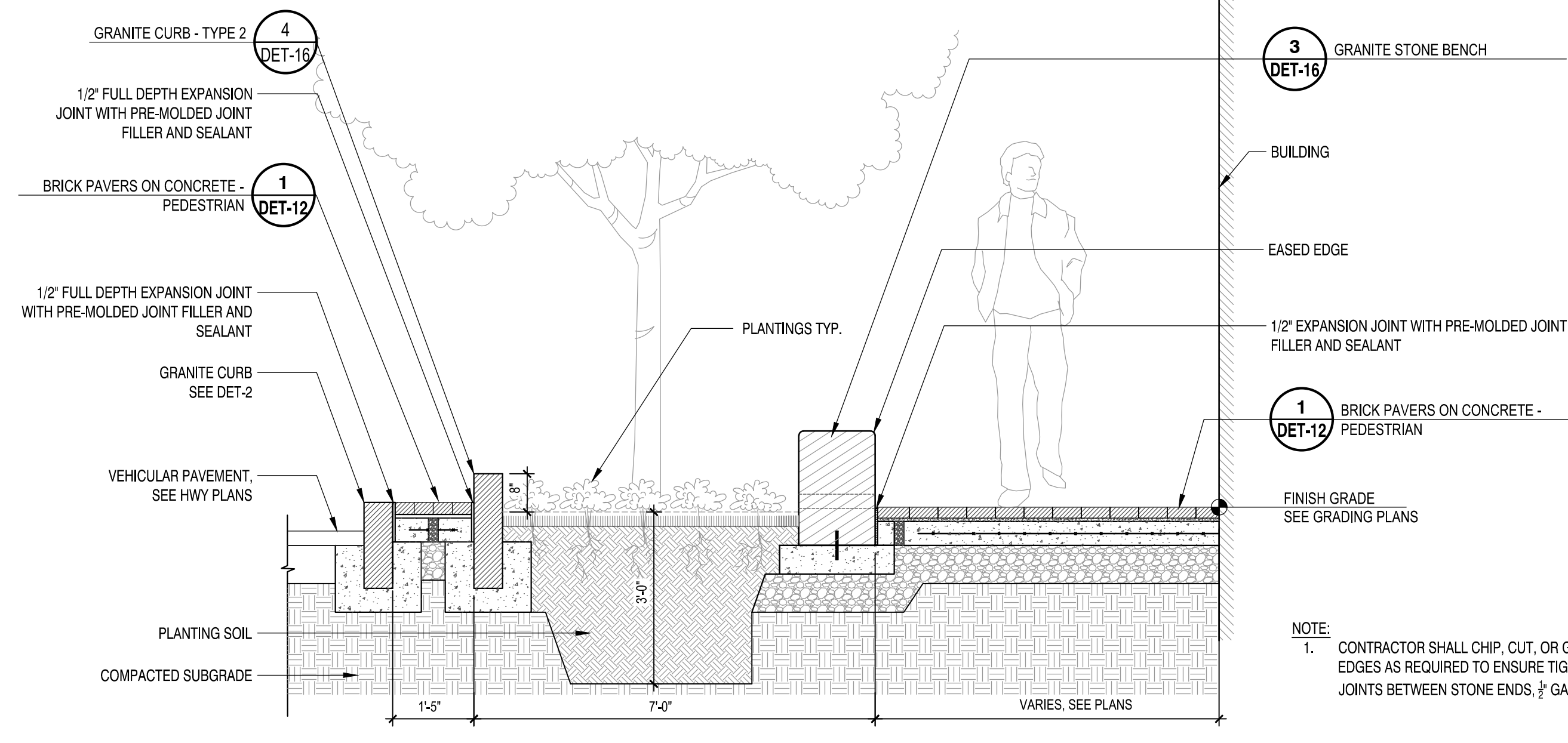
Drawing Title:
LANDSCAPE DETAILS

Sheet Number:
DET-15



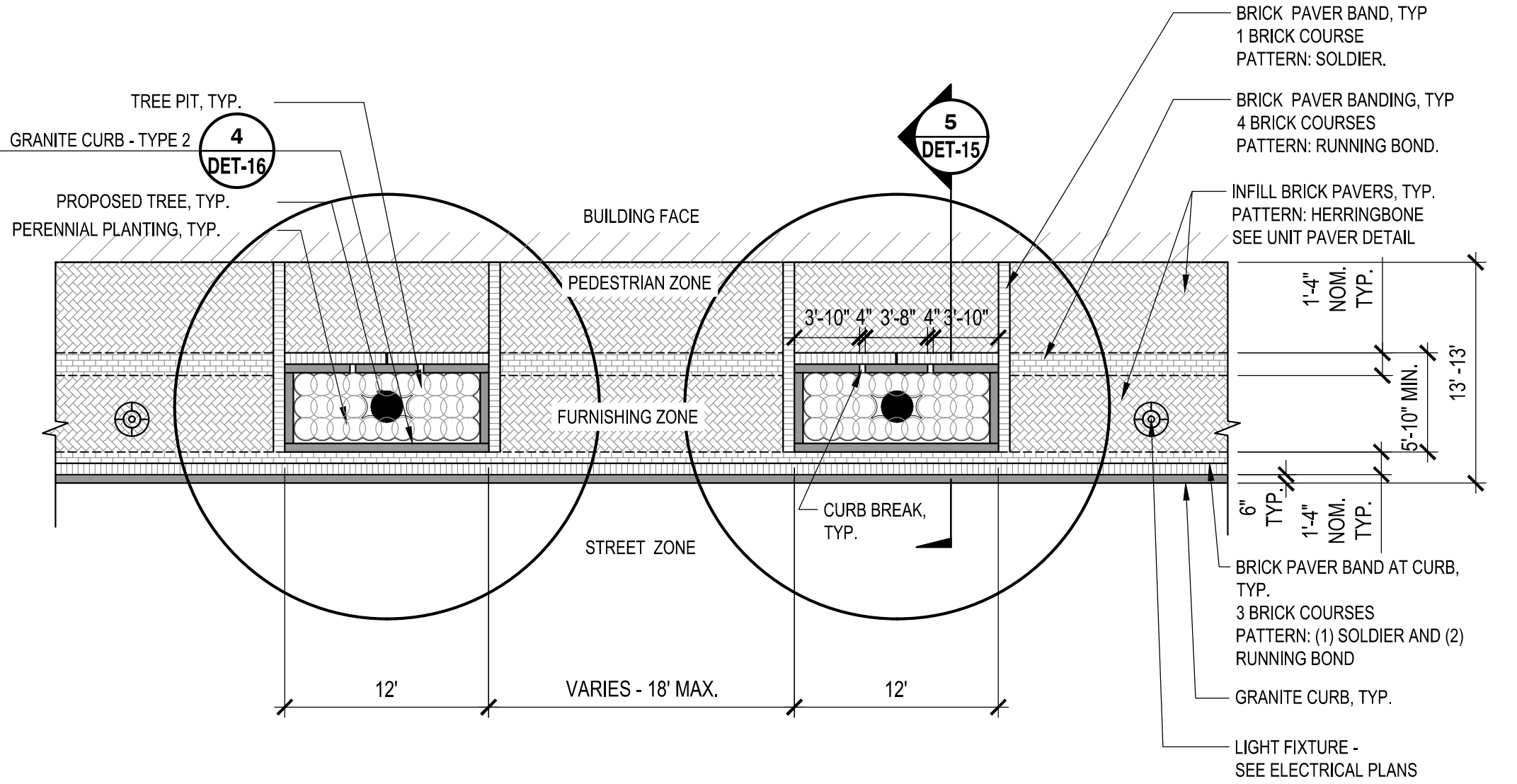
1 TREE PIT- TYPE 1 - SEATWALL, TYP.
NOT TO SCALE

CT-BR-39



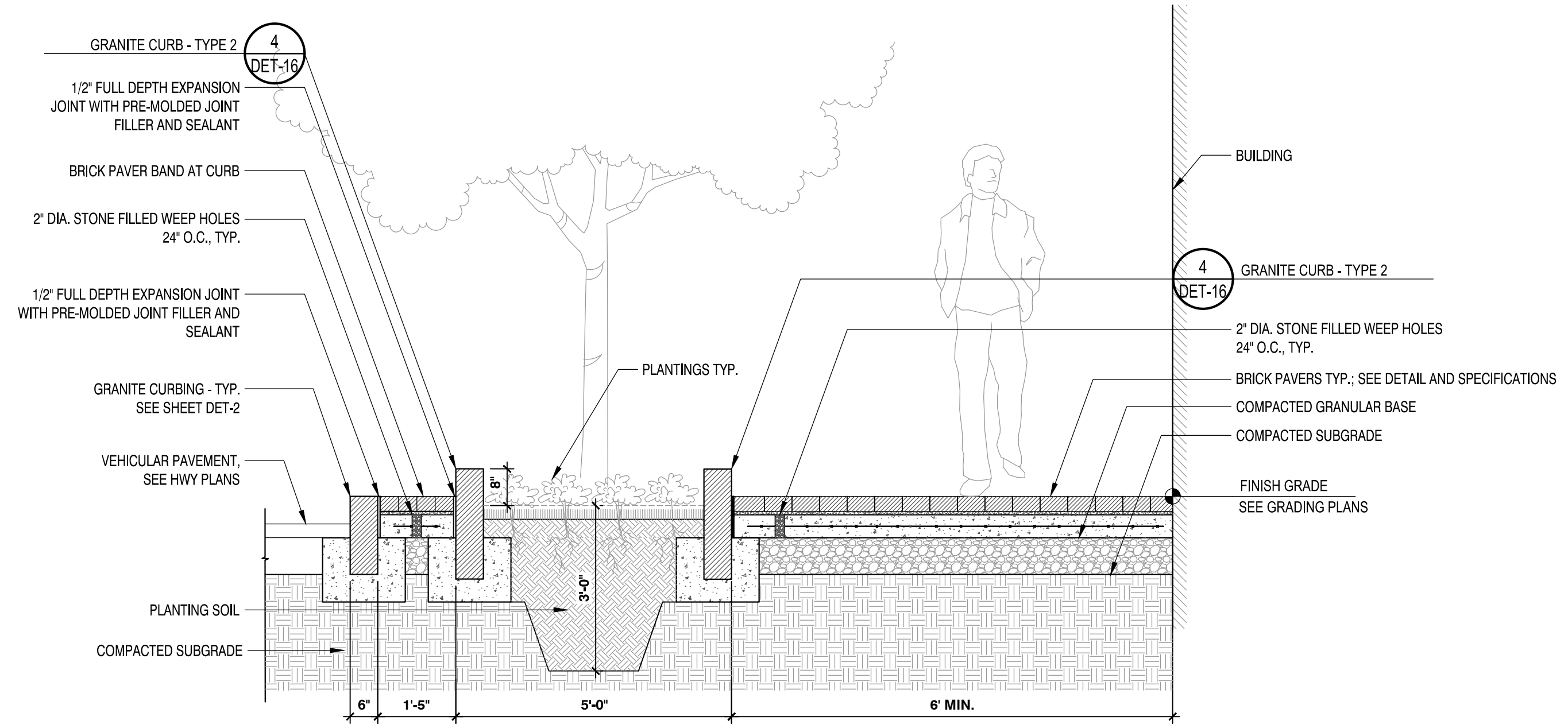
4 SECTION - TREE PIT- TYPE1 -SEATWALL, TYP.
NOT TO SCALE

CT-BR-40



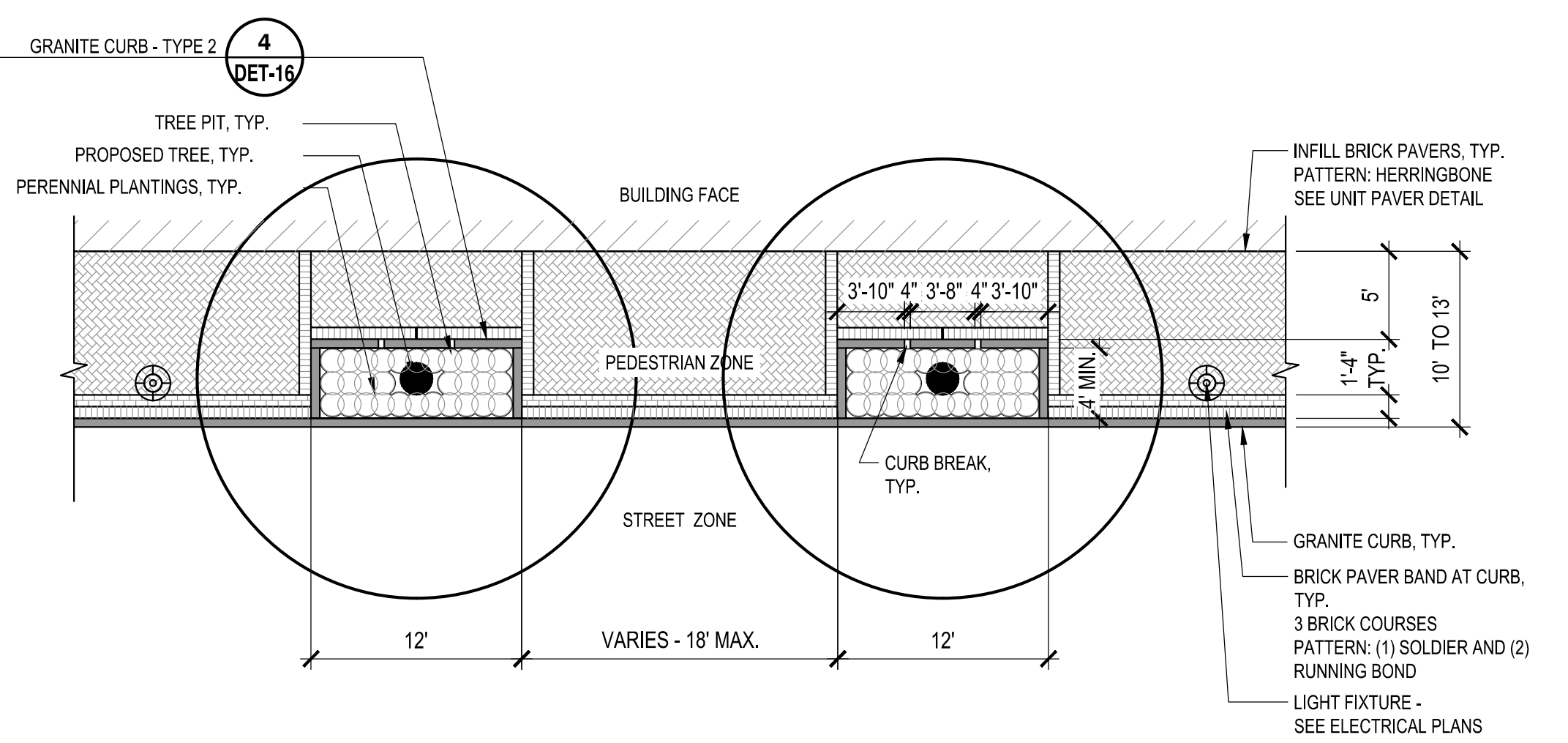
2 TREE PIT- TYPE 2 - PLANTER, TYP.
NOT TO SCALE

CT-BR-41



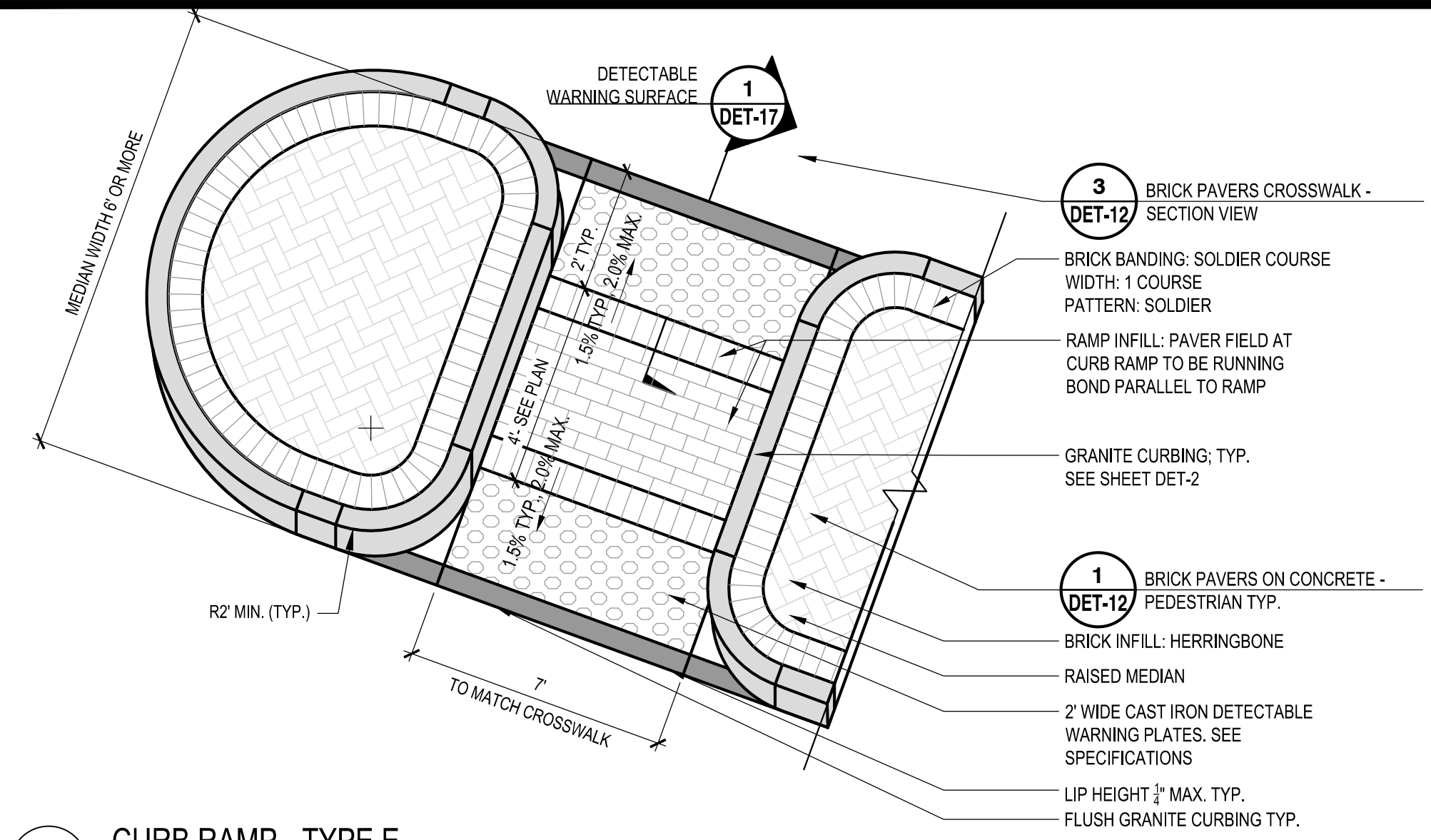
5 SECTION - TREE PIT- TYPE 2 PLANTER, TYP.
NOT TO SCALE

CT-BR-42

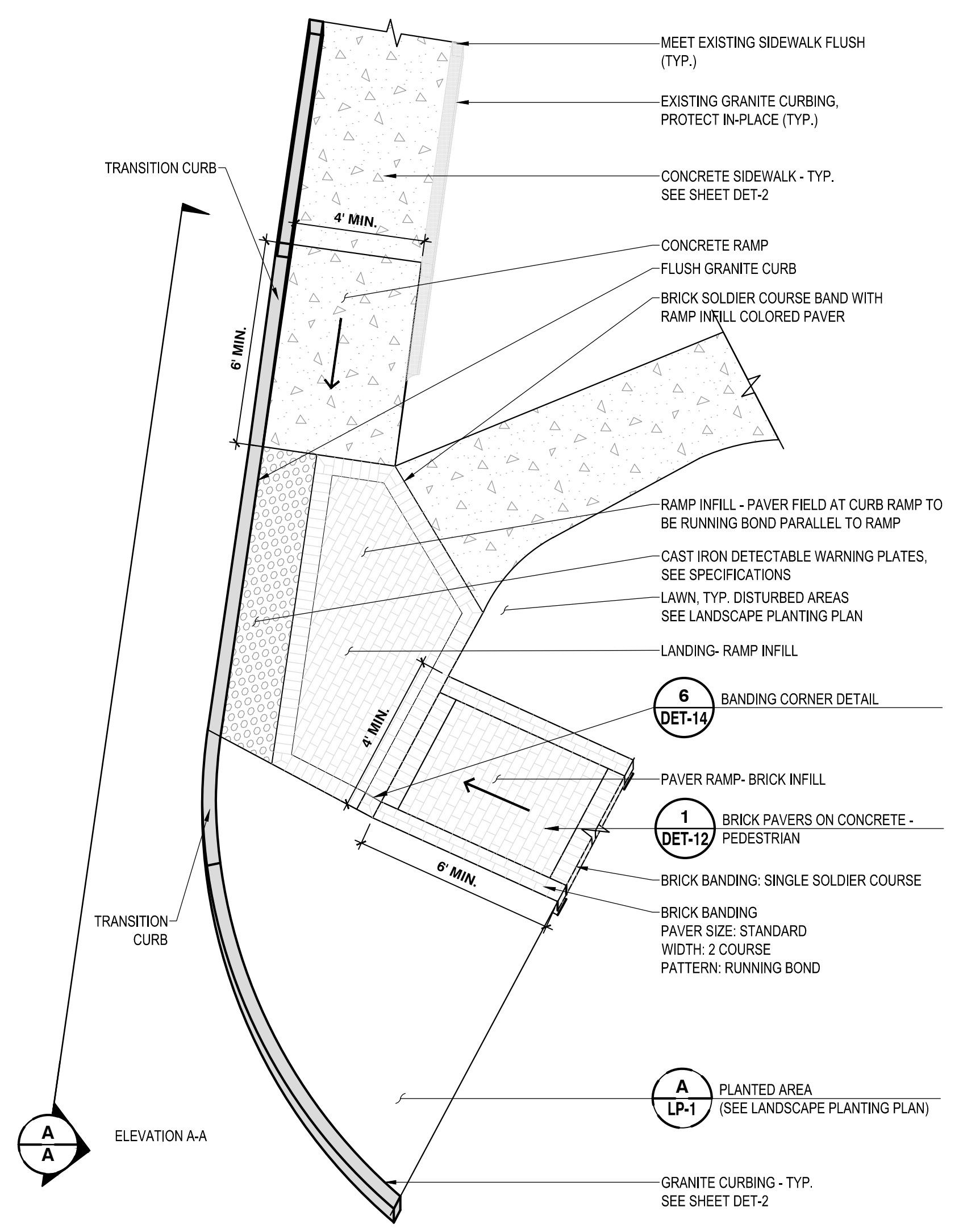
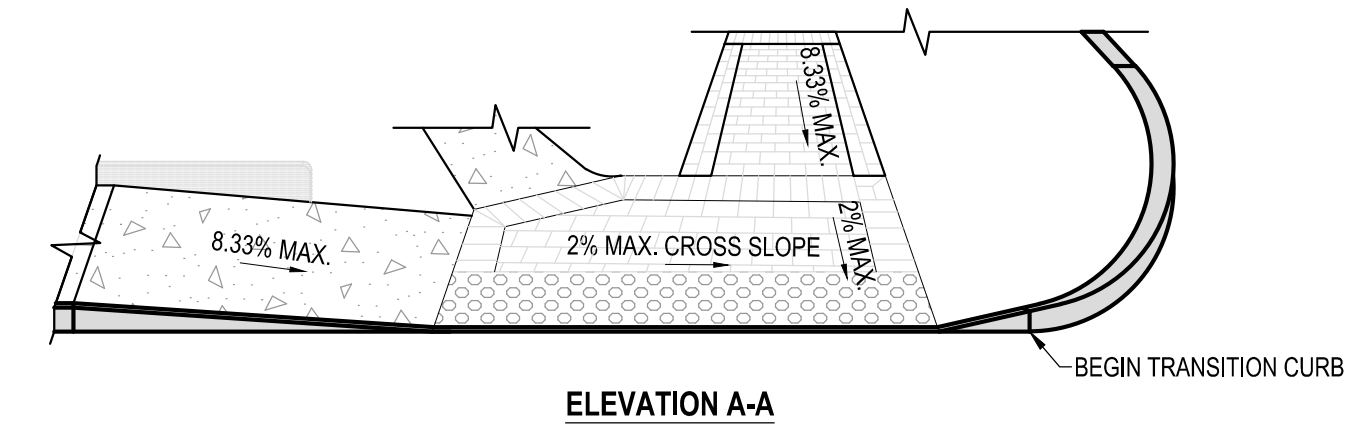


3 TREE PIT- TYPE 3 - NARROW, TYP.
NOT TO SCALE

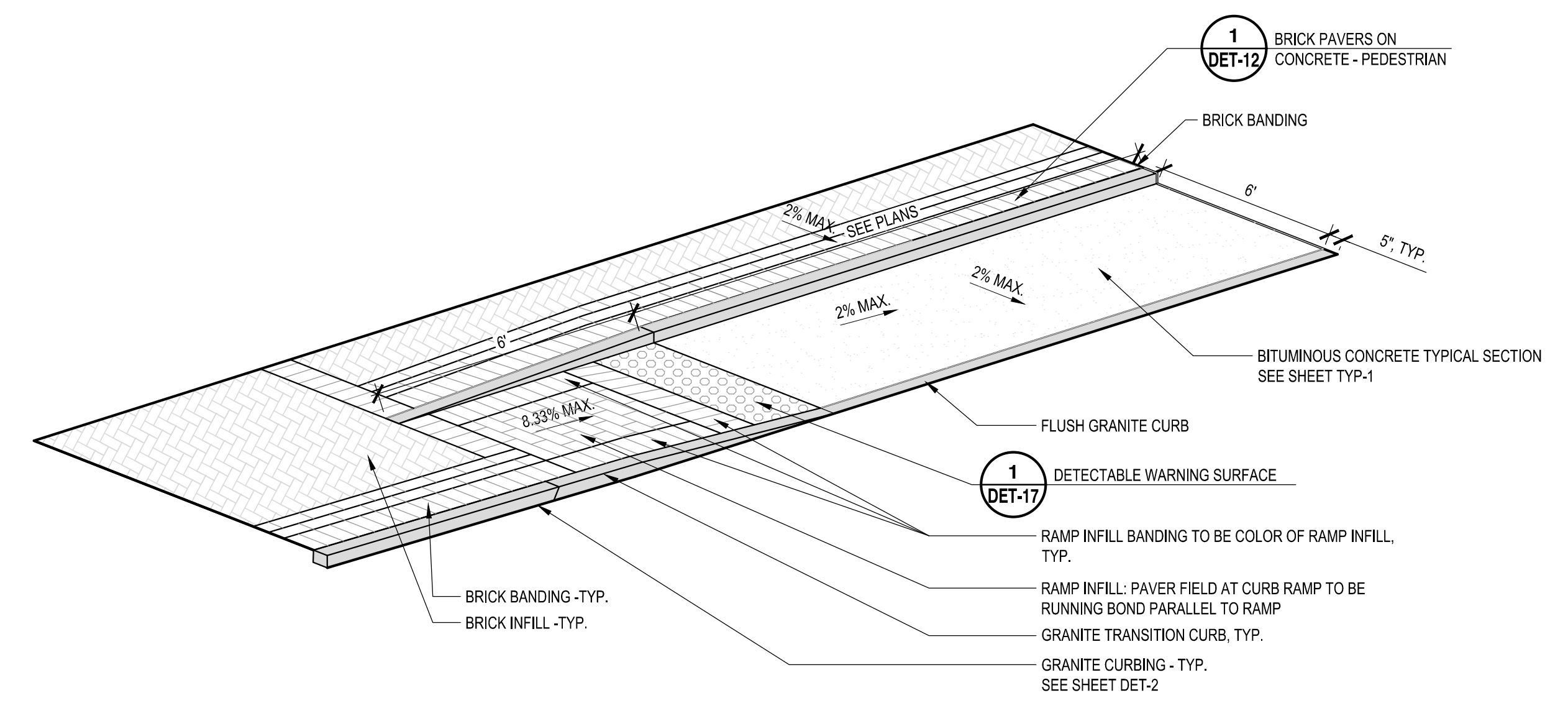
CT-BR-43



1 CURB RAMP - TYPE E
NOT TO SCALE CT-BR-118



2 CURB RAMP - TYPE D (CUSTOM)
NOT TO SCALE CT-BR-119



3 CURB RAMP - TYPE F (ACCESSIBLE PARALLEL PARKING STALL)
NOT TO SCALE CT-BR-121

Consultants:

Revisions:

No.	Date	Description

Seal:

COA:

Issued For:
BID SET

Scale: AS NOTED

Date: DECEMBER 13, 2024

Drawn By: JT, JC

Reviewed By: RC

Approved By: MJJ

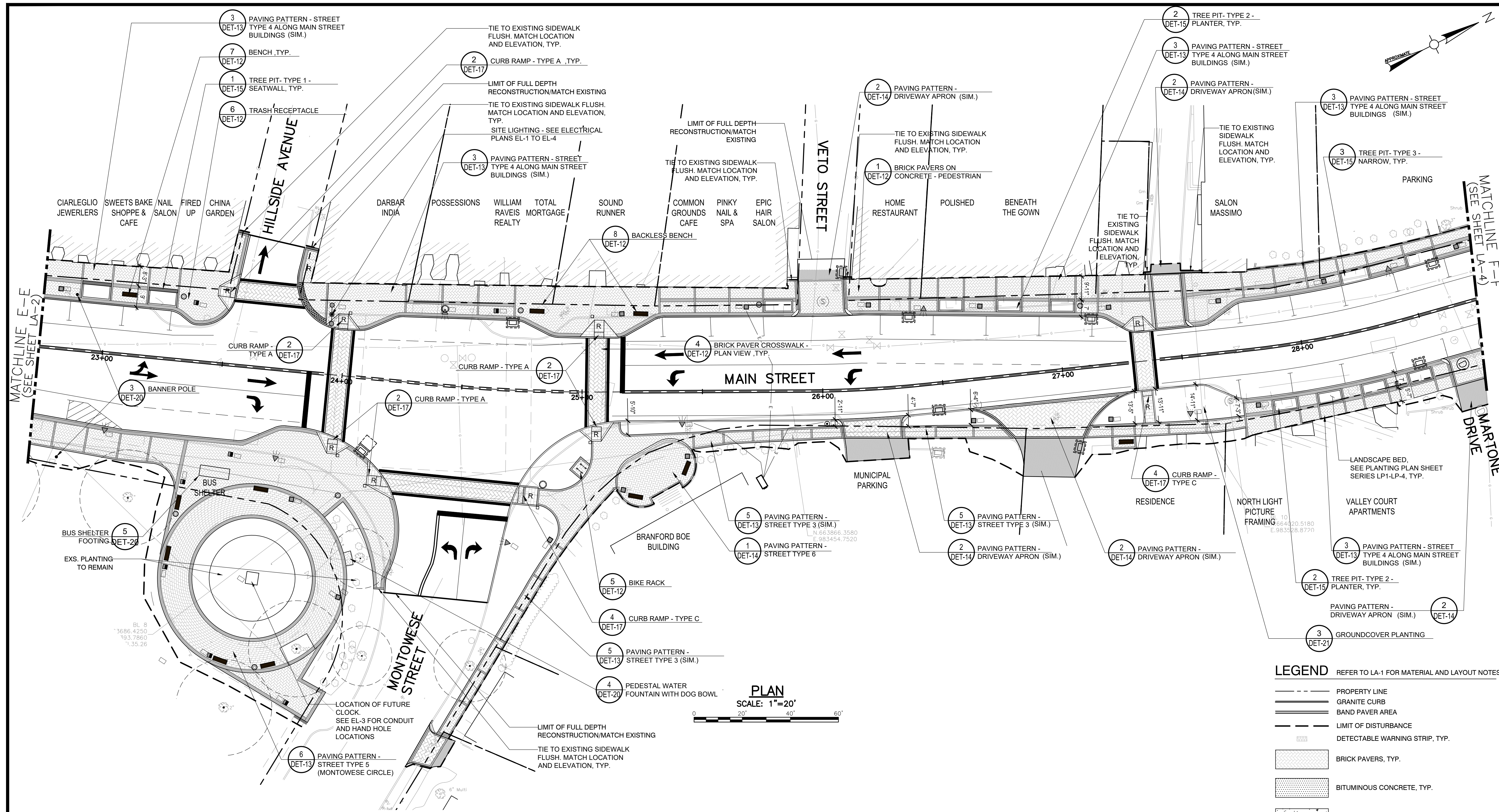
W&S Project No.: ENG21-0163

W&S File No.:

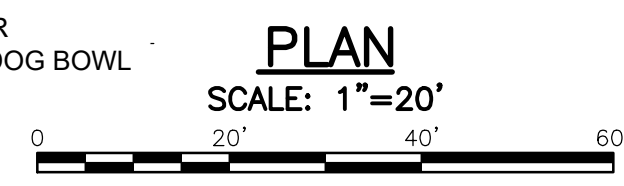
Drawing Title:
LANDSCAPE DETAILS

Sheet Number:

DET-18



1 ENLARGEMENT PLAN C
SCALE: 1"=20'-0"



LEGEND REFER TO LA-1 FOR MATERIAL AND LAYOUT NOTES

- PROPERTY LINE
- GRANITE CURB
- BAND PAVER AREA
- LIMIT OF DISTURBANCE
- DETECTABLE WARNING STRIP, TYP.
- BRICK PAVERS, TYP.
- BITUMINOUS CONCRETE, TYP.
- CONCRETE SIDEWALK, TYP.
- BENCH, TYP.; OVERALL QTY 30
- TRASH RECEPTACLE, TYP.; OVERALL QTY 19
- BIKE RACK, TYP.; OVERALL QTY 4
- EXISTING TREES TO REMAIN
- ELECTRICAL FEATURES (SEE ELEC. DWGS. EL-1 TO EL-4)
- SITE LIGHTING TYPE 1
- SITE LIGHTING TYPE 2
- SITE LIGHTING TYPE 3
- SITE LIGHTING TYPE 5
- SITE LIGHTING TYPE 6
- SITE LIGHTING TYPE 7
- ELECTRICAL HANDHOLE
- PEDESTRIAN PUSH BUTTON AND SIGN (SEE TRAFFIC CONTROL SIGNAL PLANS)
- TRAFFIC POLE AND SIGNAL (SEE TRAFFIC CONTROL SIGNAL PLANS)

Project:
TOWN OF BRANFORD

MAIN STREET RECONSTRUCTION AND REHABILITATION PROJECT NO.: L014-0002

1019 MAIN STREET
BRANFORD, CT 06405

Weston & Sampson

Weston & Sampson Engineers, Inc.
712 Brook Street, Suite 103
Rocky Hill, CT 06067
860.513.1473 800.SAMPSON
www.westonandsampson.com

Consultants:

Revisions:

No.	Date	Description

Seal:

COA:

Issued For:

BID SET

Scale: AS NOTED

Date: DECEMBER 13, 2024

Drawn By: JT, JC, EW

Reviewed By: RC

Approved By: MJJ

W&S Project No.: ENG21-0163

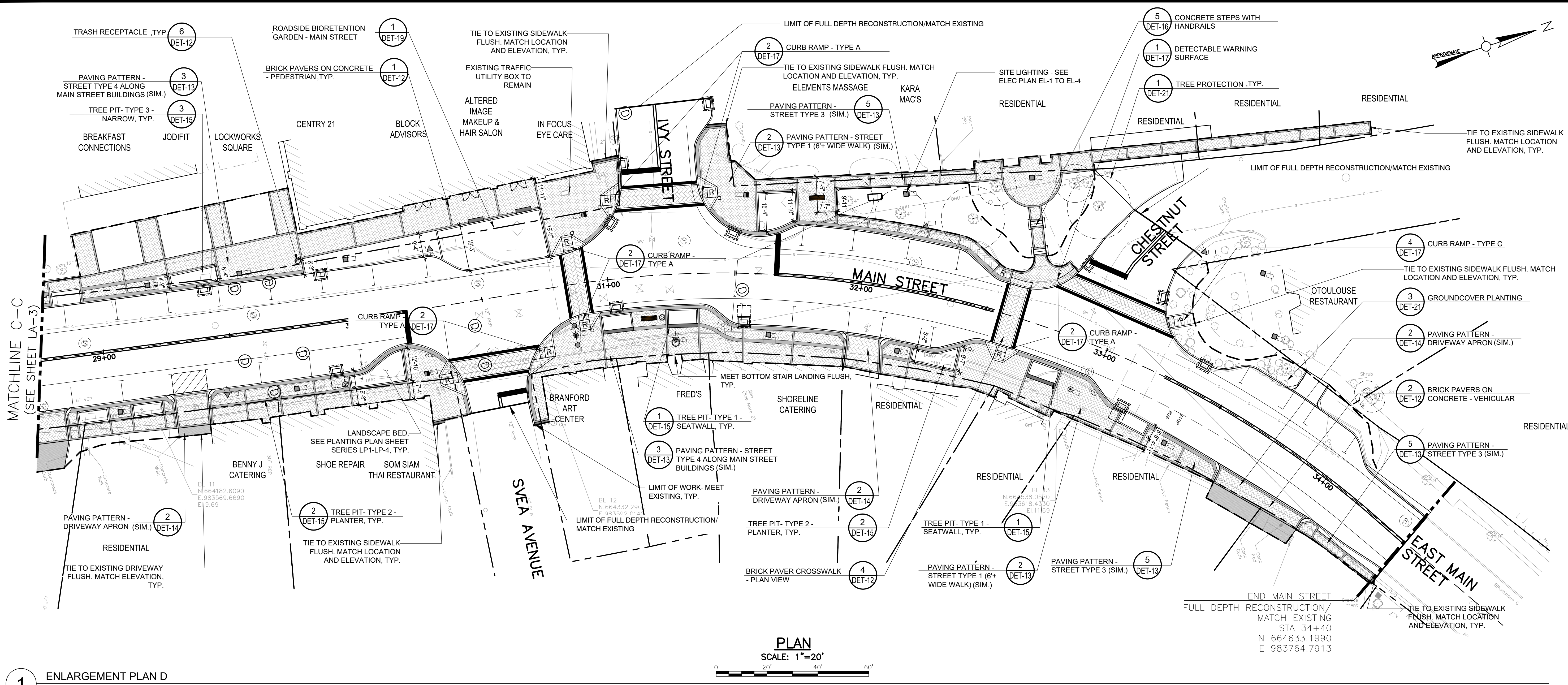
W&S File No.:

Drawing Title:

**LANDSCAPE IMPROVEMENTS PLAN
MAIN STREET
STA. 22+75 TO 28+75**

Sheet Number:

LA-3



1 ENLARGEMENT PLAN D
SCALE: 1"=20'-0"

PLAN
SCALE: 1"=20'
0 20' 40' 60'

LEGEND REFER TO LA-1 FOR MATERIAL AND LAYOUT NOTES

- PROPERTY LINE
- GRANITE CURB
- BAND PAVER AREA
- LIMIT OF DISTURBANCE
- DETECTABLE WARNING STRIP, TYP.
- BRICK PAVERS, TYP.
- BITUMINOUS CONCRETE, TYP.
- CONCRETE SIDEWALK, TYP.
- BENCH, TYP.; OVERALL QTY 30
- TRASH RECEPTACLE, TYP.; OVERALL QTY 19
- BIKE RACK, TYP.; OVERALL QTY 4
- EXISTING TREES TO REMAIN
- ELECTRICAL FEATURES (SEE ELEC. DWGS. EL-1 TO EL-4)
- SITE LIGHTING TYPE 1
- SITE LIGHTING TYPE 2
- SITE LIGHTING TYPE 3
- SITE LIGHTING TYPE 5
- SITE LIGHTING TYPE 6
- SITE LIGHTING TYPE 7
- ELECTRICAL HANDHOLE
- PEDESTRIAN PUSH BUTTON AND SIGN (SEE TRAFFIC CONTROL SIGNAL PLANS)
- TRAFFIC POLE AND SIGNAL (SEE TRAFFIC CONTROL SIGNAL PLANS)

Project:
TOWN OF BRANFORD

MAIN STREET
RECONSTRUCTION AND
REHABILITATION
PROJECT NO.: L014-0002

1019 MAIN STREET
BRANFORD, CT 06405

Weston & Sampson

Weston & Sampson Engineers, Inc.
712 Brook Street, Suite 103
Rocky Hill, CT 06067
860.513.1473 800.SAMPSON
www.westonandsampson.com

Consultants:

Revisions:

No.	Date	Description

Seal:

COA:

Issued For:

BID SET

Scale: AS NOTED

Date: DECEMBER 13, 2024

Drawn By: JT, JC, EW

Reviewed By: RC

Approved By: MJJ

W&S Project No.: ENG21-0163

W&S File No.:

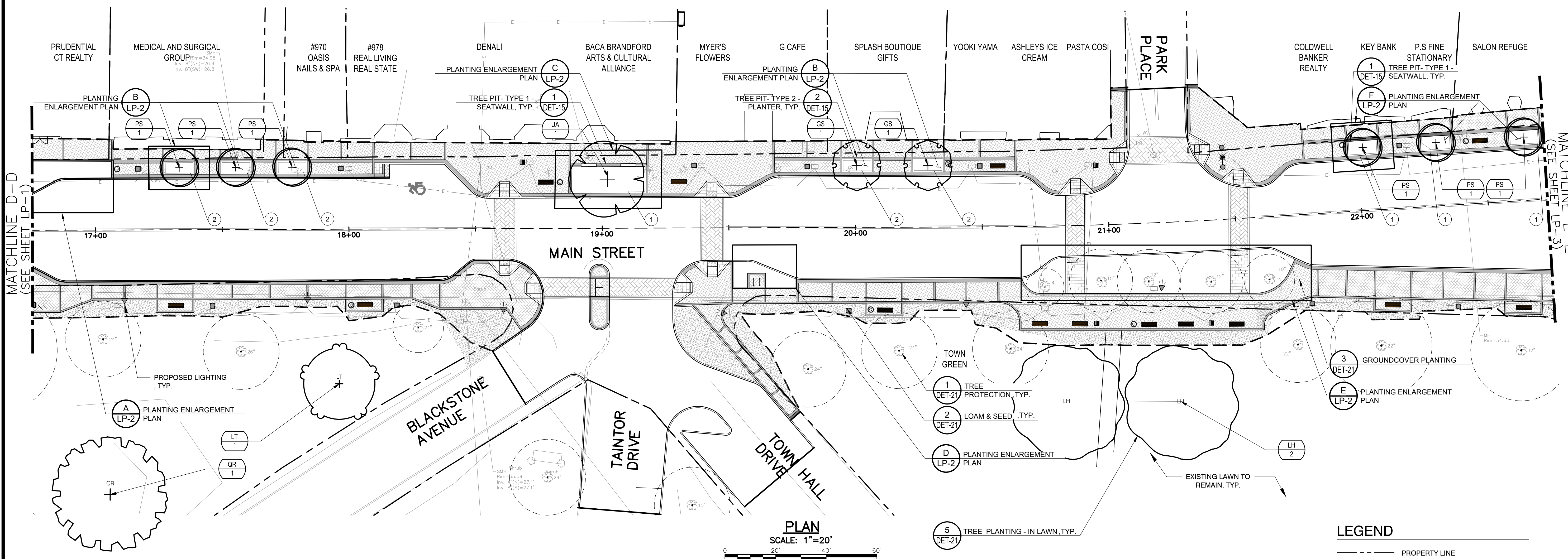
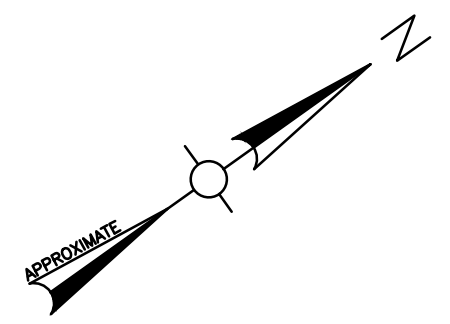
Drawing Title:

**LANDSCAPE
IMPROVEMENTS PLAN
MAIN STREET
STA. 28+75 TO 34+40**

Sheet Number:

LA-4

BRANDFORD
TOWN CENTER & APARTMENTS



MATCHLINE D-D
(SEE SHEET LP-1)

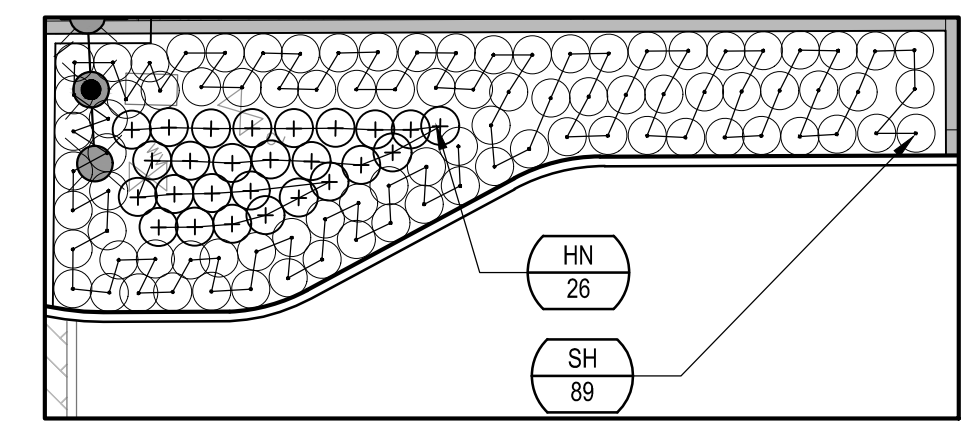
MATCHLINE E-E
(SEE SHEET LP-3)

1 ENLARGEMENT PLAN
SCALE: 1"=20'-0"

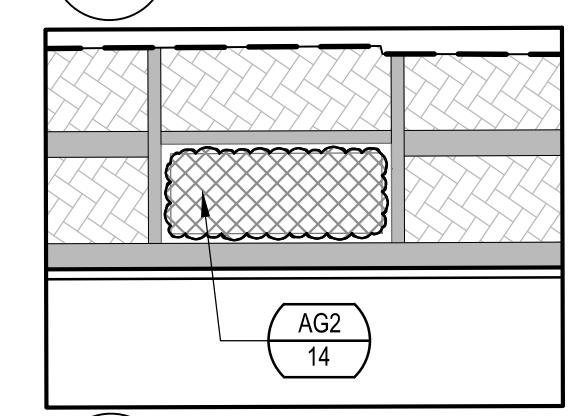
PLANT QUANTITIES ARE REPRESENTATIVE FOR PLANTS ON SHEET LP-2 ONLY

PLANT SCHEDULE LP-2

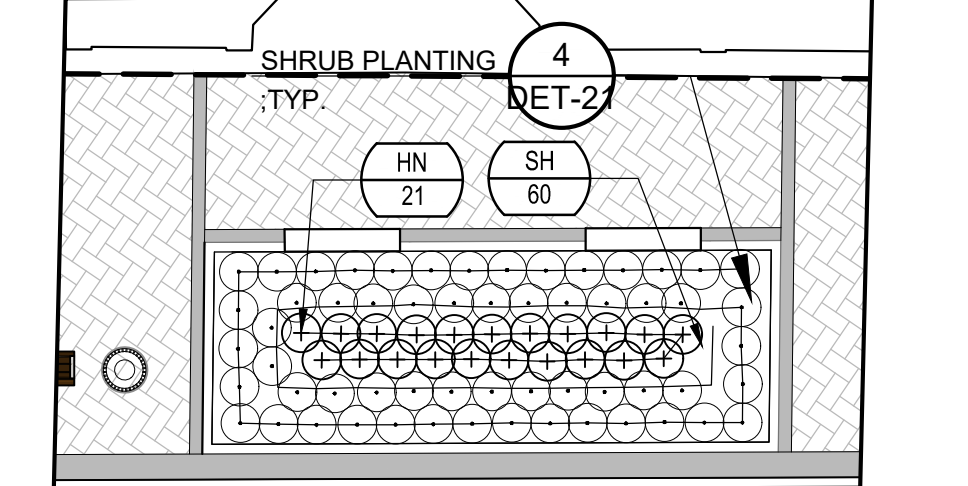
CODE	QTY	BOTANICAL NAME	COMMON NAME	SIZE	CONTAINER	REMARKS
TREES						
GS	2	GLEDITSIA TRIACANTHOS INERMIS 'SHADEMASTER'	SHADEMASTER HONEY LOCUST	2.5'-3" CAL.		6'H MIN. BRANCHING HT.
LH	2	LIQUIDAMBAR STYRACIFLUA 'HAPPDELL'	HAPPIDAZE® SWEET GUM	2.5'-3" CAL.		6' MIN. BRANCHING HT.
LT	1	LIRIODENDRON TULIPIFERA	TULIP POPLAR	2.5'-3" CAL.		6' MIN. BRANCHING HT.
PS	6	PRUNUS SARGENTII 'JFS-KW58'	PINK FLAIR® SARGENT CHERRY	2'-2.5" CAL.	B&B	6'H MIN. BRANCHING HT., MATCHING SPECIMENS
QR	1	QUERCUS RUBRA	RED OAK	2.5'-3" CAL.		6' MIN. BRANCHING HT.
UA	1	ULMUS AMERICANA 'PRINCETON'	PRINCETON AMERICAN ELM	2.5'-3" CAL.		6'H MIN. BRANCHING HT.
SHRUBS						
AG	41	ARONIA MELANOCARPA 'UCONNAM012'	GROUND HUG® BLACK CHOKEBERRY	#2	CONT.	SPACING AS SHOWN
HN	47	HELENIUM AUTUMNALE 'FUEGO'	MARIACHI™ FUEGO SNEEZEWEED	#1	CONT.	24" O.C.
SH	189	SPOROBOLUS HETEROLEPIS 'TARA'	TARA PRAIRIE DROPSSEED	#1	CONT.	24" O.C.
GROUND COVERS						
AG2	378	ARONIA MELANOCARPA 'UCONNAM012'	GROUND HUG® BLACK CHOKEBERRY	#2	CONTAINER	24" o.c.



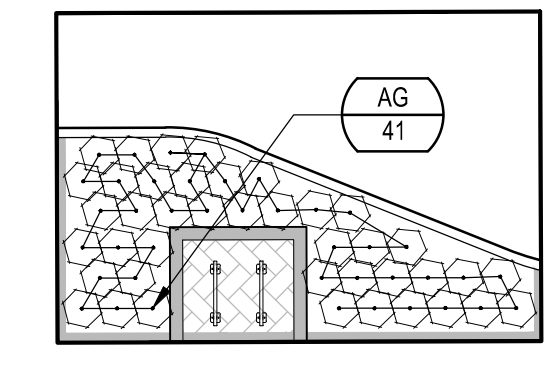
A PLANTING ENLARGEMENT PLAN
SCALE: 1"=10'-0"



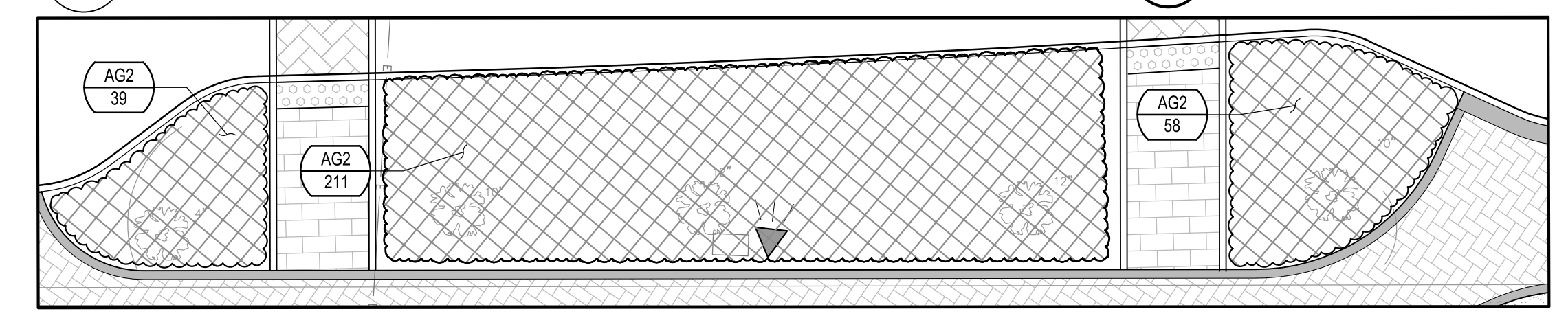
B PLANTING ENLARGEMENT PLAN
SCALE: 1"=10'-0"



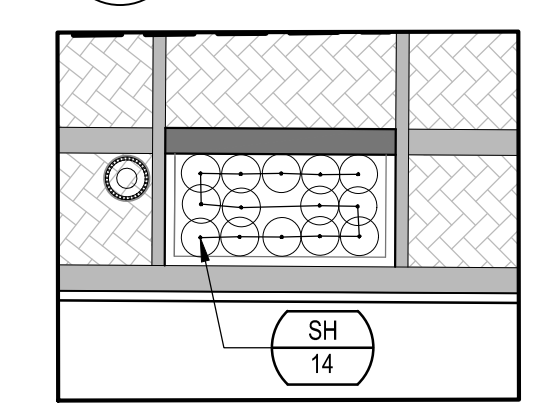
C PLANTING ENLARGEMENT PLAN
SCALE: 1"=10'-0"



D PLANTING ENLARGEMENT PLAN
SCALE: 1"=10'-0"



E PLANTING ENLARGEMENT PLAN
SCALE: 1"=10'-0"



F PLANTING ENLARGEMENT PLAN
SCALE: 1"=10'-0"

LEGEND

- PROPERTY LINE
- GRANITE CURB
- LIMIT OF DISTURBANCE
- LOAM AND SEED AT ALL DISTURBED AREAS, TYP.
- EXISTING TREES
- ① TREE PIT - TYPE 1 - SEATWALL, TYP.
- ② TREE PIT - TYPE 2 - PLANTER, TYP.
- ③ TREE PIT - TYPE 3 - NARROW, TYP.

Project:
TOWN OF BRANFORD

MAIN STREET
RECONSTRUCTION AND
REHABILITATION
PROJECT NO.: L014-0002

1019 MAIN STREET
BRANFORD, CT 06405

Weston & Sampson
Weston & Sampson Engineers, Inc.
712 Brook Street, Suite 103
Rocky Hill, CT 06067
860.513.1473 800.SAMPSON
www.westonandsampson.com

Consultants:

Revisions:

No.	Date	Description

Scale:
COA:

Issued For:
BID SET

Scale: AS NOTED

Date: DECEMBER 13, 2024
Drawn By: JT, JC, EW, EB
Reviewed By: RC
Approved By: MJJ

W&S Project No.: ENG21-0163
W&S File No.:

Drawing Title:
**PLANTING PLAN
MAIN STREET
STA. 16+75 TO 22+75**

Sheet Number:
LP-2

Consultants:

No.	Date	Description

Revisions:

No.	Date	Description

COA:

Issued For:

BID SET

Scale: AS NOTED

Date: DECEMBER 13, 2024

Drawn By: JT, JC, EW, EB

Reviewed By: RC

Approved By: MJJ

W&S Project No.: ENG21-0163

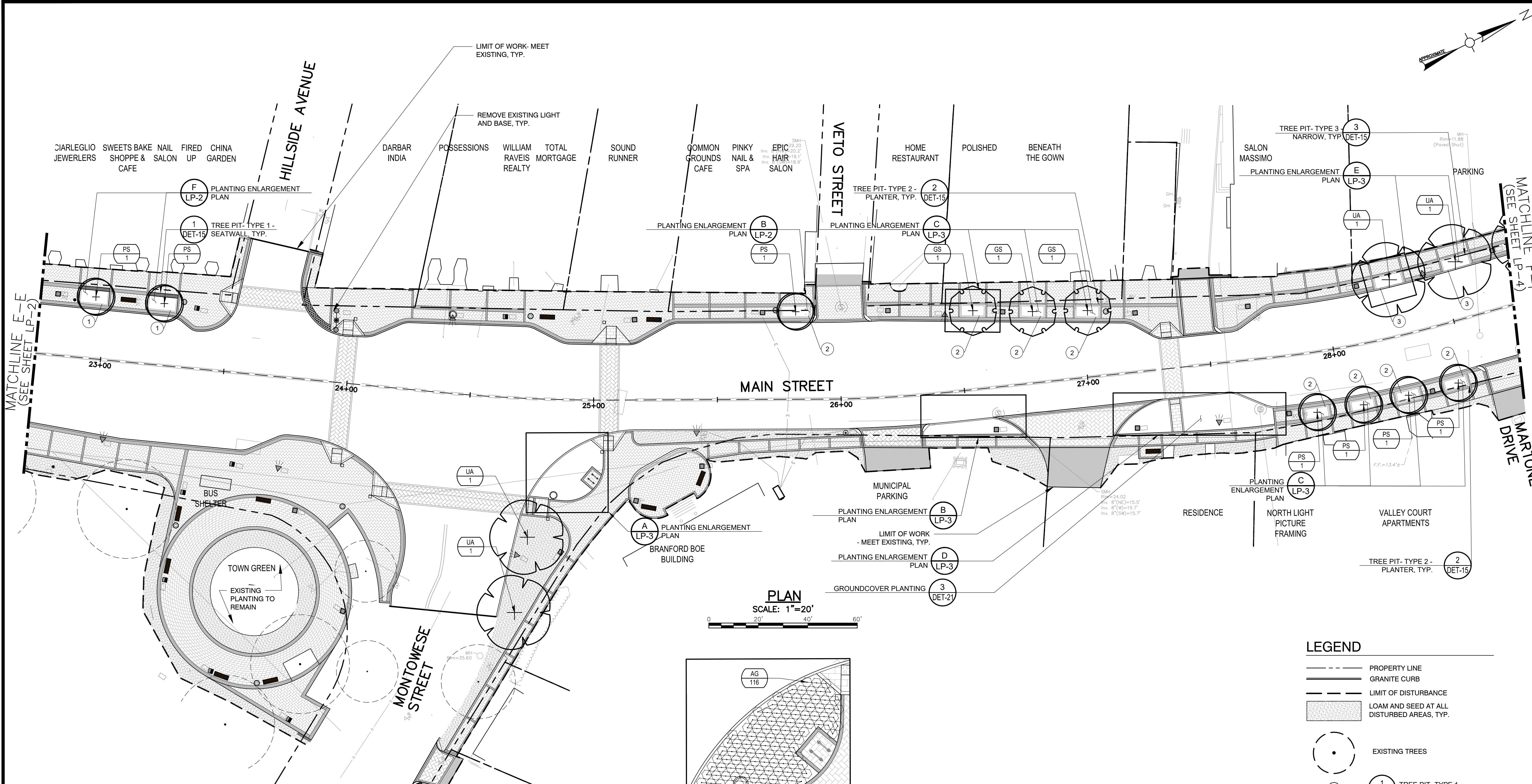
W&S File No.:

Drawing Title:

**PLANTING PLAN
MAIN STREET
STA. 22+75 TO 28+75**

Sheet Number:

LP-3



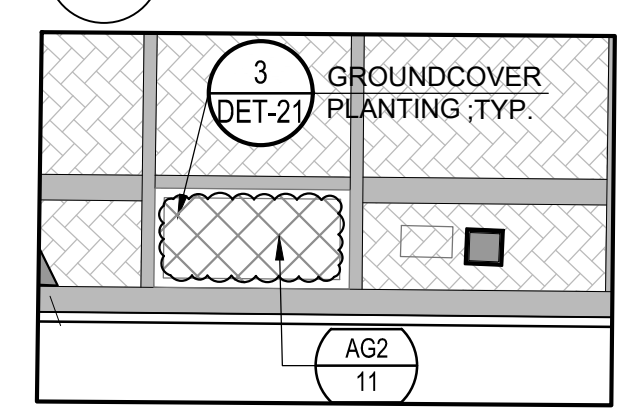
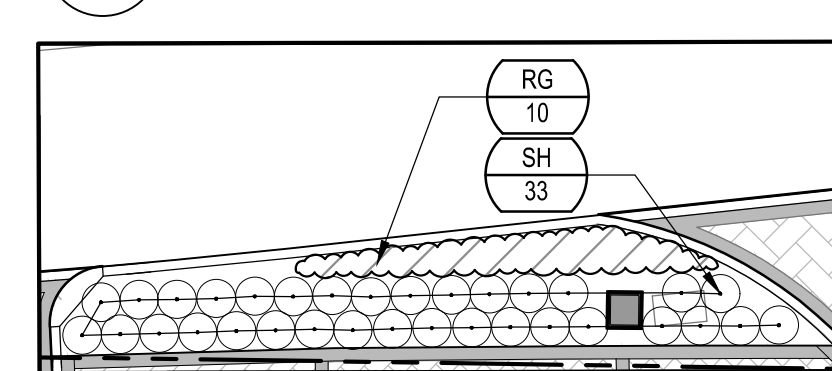
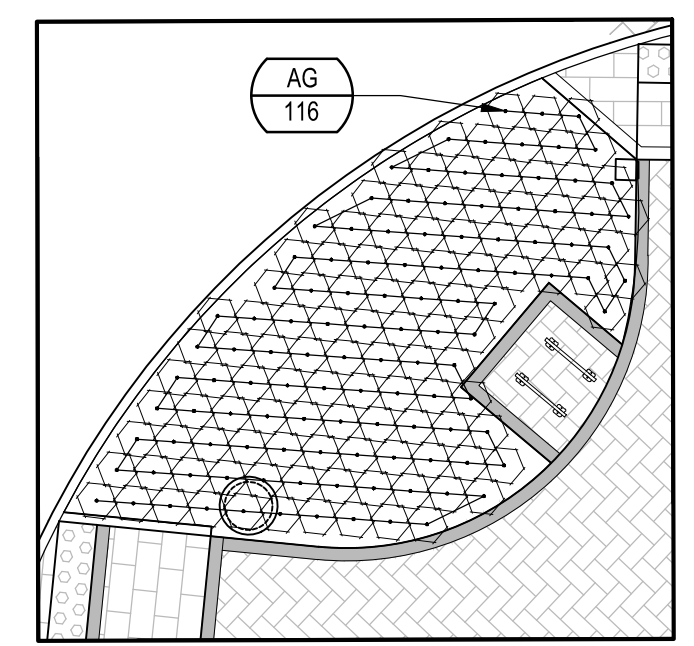
1 ENLARGEMENT PLAN
SCALE: 1"=20'-0"

PLANT QUANTITIES ARE REPRESENTATIVE FOR PLANTS ON SHEET LP-3 ONLY

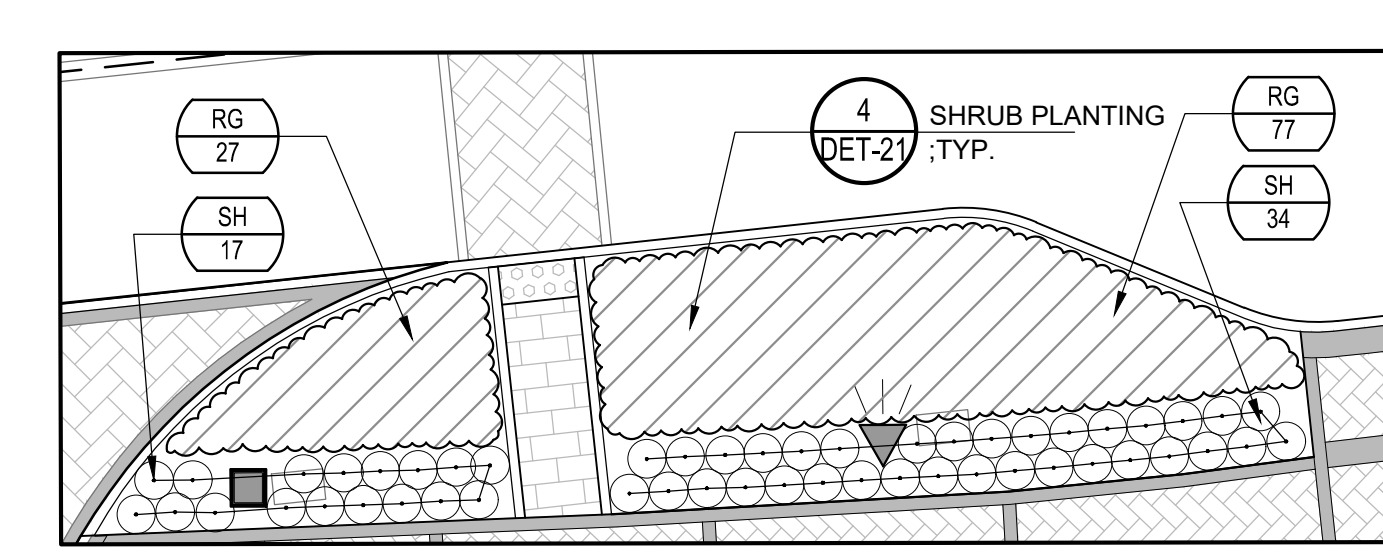
PLANT SCHEDULE LP-3

CODE	QTY	BOTANICAL NAME	COMMON NAME	SIZE	CONTAINER	REMARKS	
TREES							
GS	3	GLEDITSIA TRIACANTHOS INERMIS 'SHADEMASTER'	SHADEMASTER HONEY LOCUST	2.5'-3" CAL.		6'H MIN. BRANCHING HT.	
PS	7	PRUNUS SARGENTII 'JFS-KW58'	PINK FLAIR® SARGENT CHERRY	2'-2.5" CAL.	B&B	6'H MIN. BRANCHING HT., MATCHING SPECIMENS	
UA	4	ULMUS AMERICANA 'PRINCETON'	PRINCETON AMERICAN ELM	2.5'-3" CAL.		6'H MIN. BRANCHING HT.	
SHRUBS							
AG	117	ARONIA MELANOCARPA 'U'CONNAM012'	GROUND HUG® BLACK CHOKEBERRY	#2	CONT.	SPACING AS SHOWN	
SH	112	SPOROBOLUS HETEROLEPIS 'TARA'	TARA PRAIRIE DROPSEED	#1	CONT.	24" O.C.	
CODE	QTY	BOTANICAL NAME	COMMON NAME	SIZE	CONTAINER	SPACING	REMARKS
GROUND COVERS							
AG2	91	ARONIA MELANOCARPA 'U'CONNAM012'	GROUND HUG® BLACK CHOKEBERRY	#2	CONTAINER	24" o.c.	
RG	140	RHUS AROMATICA 'GRO-LOW'	GRO-LOW FRAGRANT SUMAC	#1	CONTAINER	24" o.c.	

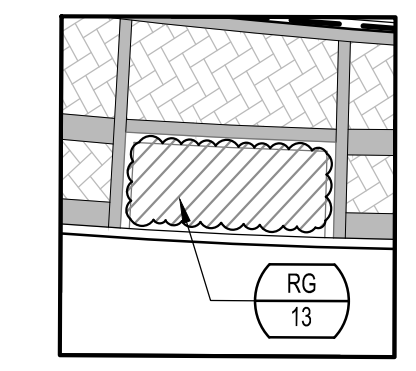
PLAN
SCALE: 1"=20'



C PLANTING ENLARGEMENT PLAN
SCALE: 1"=10'-0"



D PLANTING ENLARGEMENT PLAN
SCALE: 1"=10'-0"



E PLANTING ENLARGEMENT PLAN
SCALE: 1"=10'-0"

LEGEND

- PROPERTY LINE
- GRANITE CURB
- LIMIT OF DISTURBANCE
- LOAM AND SEED AT ALL DISTURBED AREAS, TYP.
- EXISTING TREES
- TREE PIT- TYPE 1 - SEATWALL, TYP.
- TREE PIT- TYPE 2 - PLANTER, TYP.
- TREE PIT- TYPE 3 - NARROW, TYP.

J:\Projects\2024\1014-0002_Main Street Reconstruction and Rehabilitation\CD\Main Street LP-3.dwg

Consultants:

No.	Date	Description

Revisions:

No.	Date	Description

COA:

Scale: AS NOTED

Date: DECEMBER 13, 2024

Drawn By: JT, JC, EW, EB

Reviewed By: RC

Approved By: MJJ

W&S Project No.: ENG21-0163

W&S File No.:

Issued For:

BID SET

Scale: AS NOTED

Date: DECEMBER 13, 2024

Drawn By: JT, JC, EW, EB

Reviewed By: RC

Approved By: MJJ

W&S Project No.: ENG21-0163

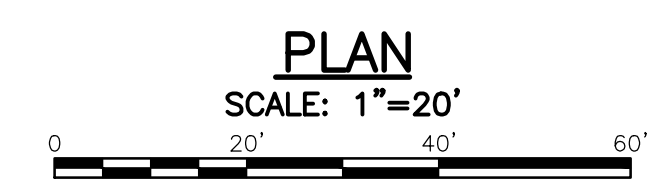
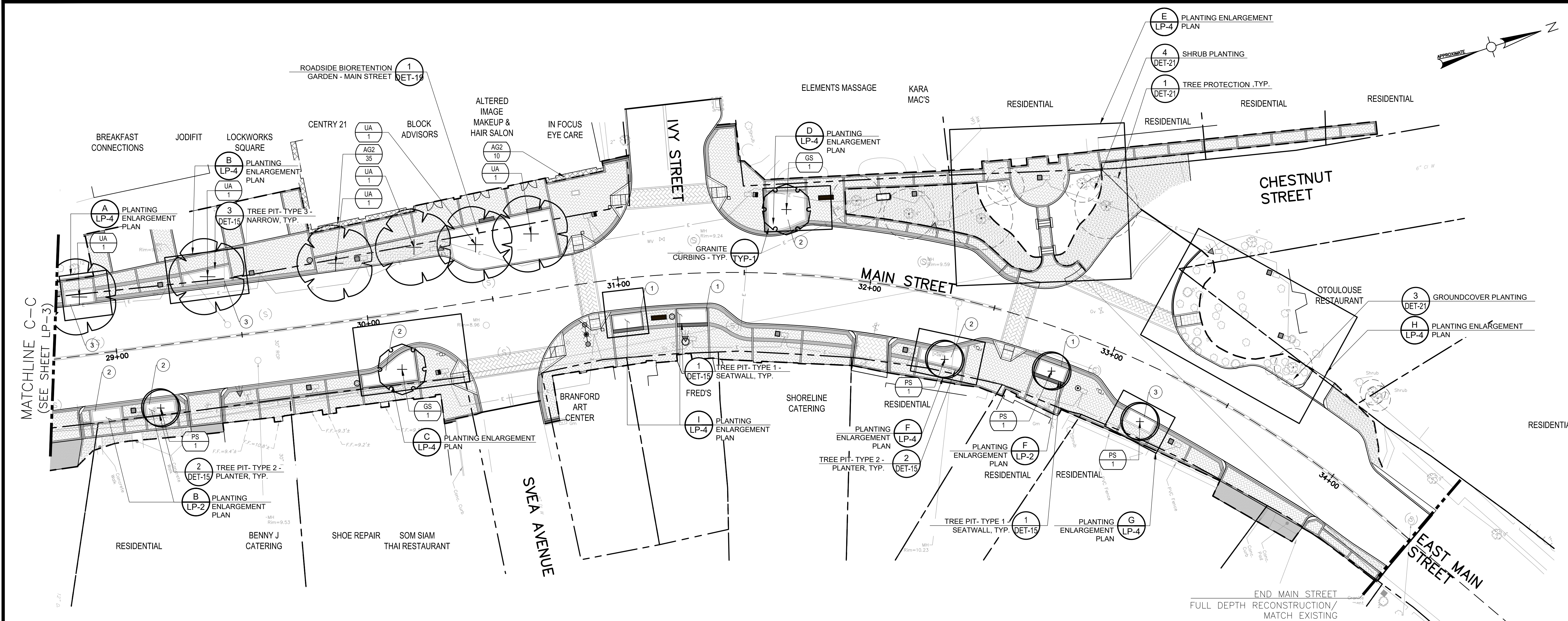
W&S File No.:

Drawing Title:

**PLANTING PLAN
MAIN STREET
STA. 28+75 TO 34+40**

Sheet Number:

LP-4

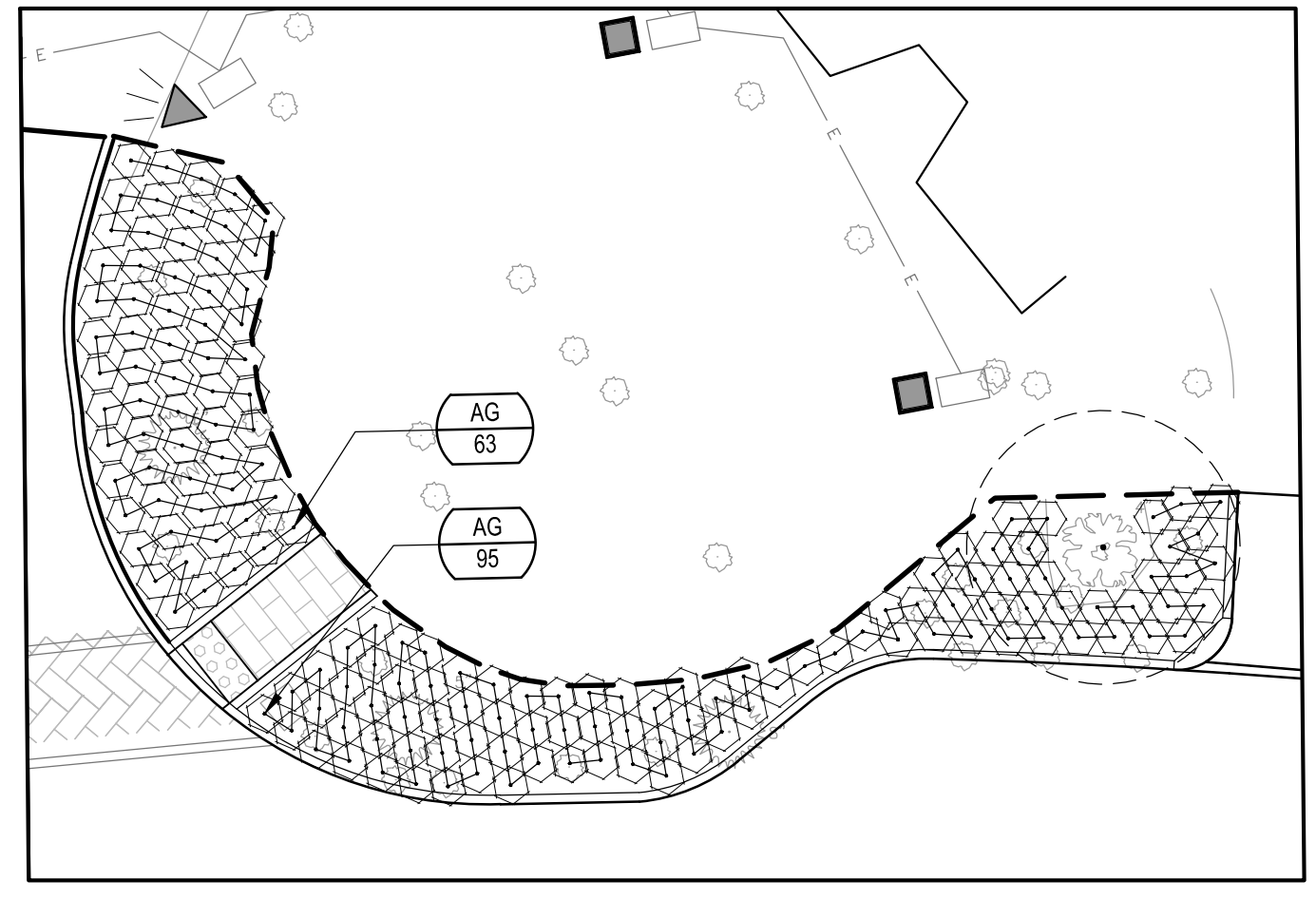
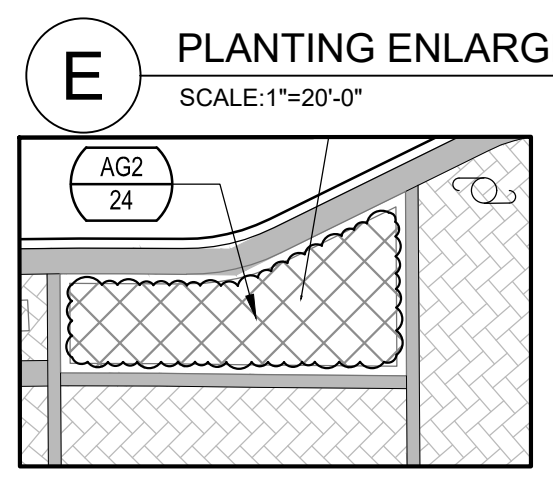
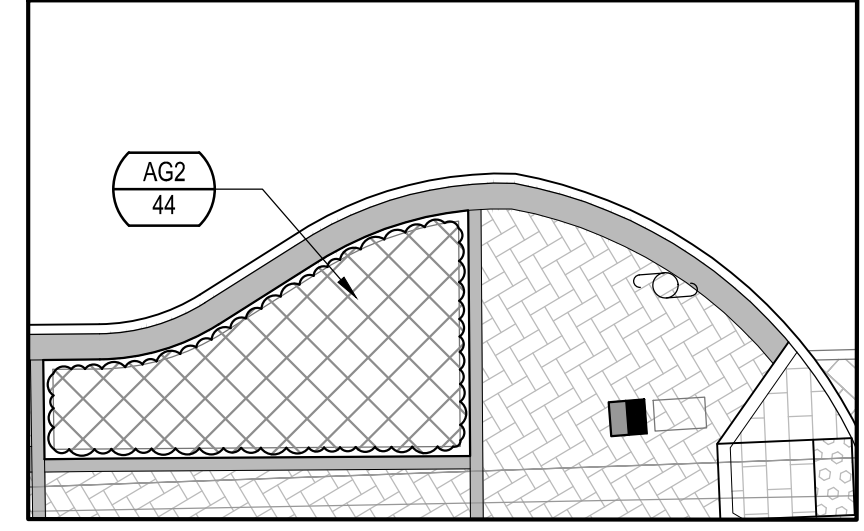
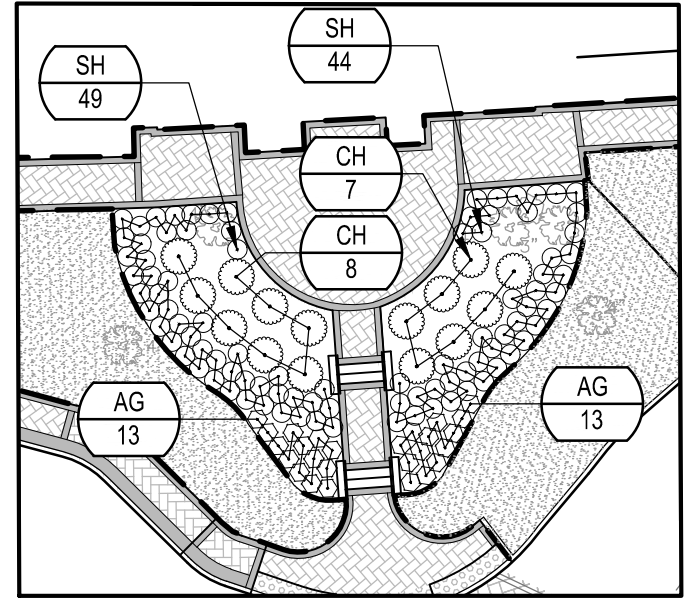
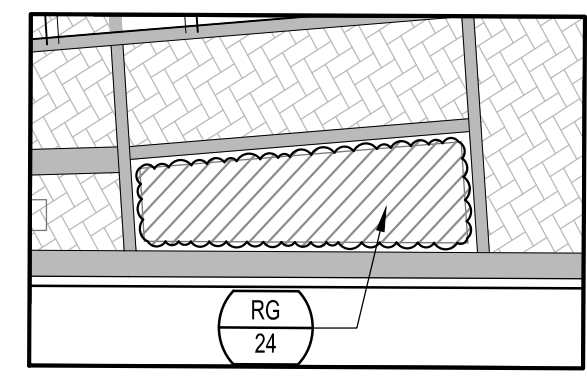
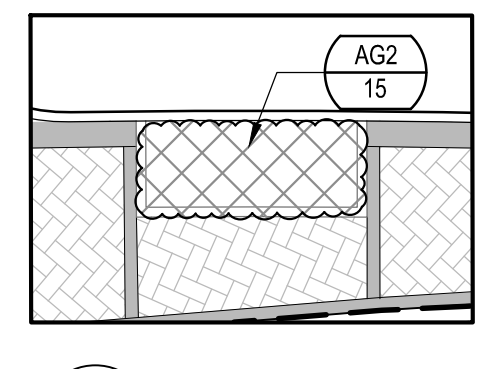
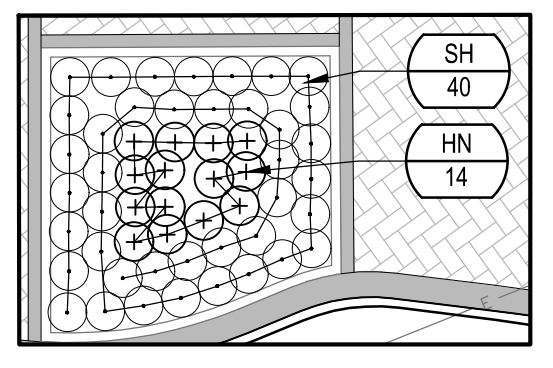
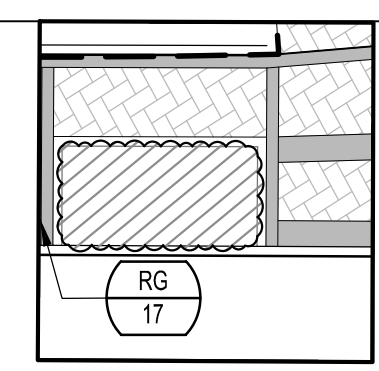


1 ENLARGEMENT PLAN
SCALE: 1"=20'-0"

PLANT QUANTITIES ARE REPRESENTATIVE FOR PLANTS ON SHEET LP-4 ONLY
SEE DET-19 FOR MAIN STREET BIORETENTION GARDEN PLANT QUANTITIES

PLANT SCHEDULE LP-4

CODE	QTY	BOTANICAL NAME	COMMON NAME	SIZE	CONTAINER	REMARKS
TREES						
GS	2	GLEDTISIA TRIACANTHOS INERMIS 'SHADEMASTER'	SHADEMASTER HONEY LOCUST	2.5"-3" CAL.		6'H MIN. BRANCHING HT.
PS	4	PRUNUS SARGENTII 'JFS-KW58'	PINK FLAIR® SARGENT CHERRY	2"-2.5" CAL.	B&B	6'H MIN. BRANCHING HT., MATCHING SPECIMENS
UA	6	ULMUS AMERICANA 'PRINCETON'	PRINCETON AMERICAN ELM	2.5"-3" CAL.		6'H MIN. BRANCHING HT.
SHRUBS						
AG	185	ARONIA MELANOCARPA 'UCCONAM012'	GROUND HUG® BLACK CHOKEBERRY	#2	CONT.	SPACING AS SHOWN
CH	15	CLETHRA ALNIFOLIA 'HUMMINGBIRD'	HUMMINGBIRD SUMMERSWEET	24"-30" HT.	CONT.	SPACING AS SHOWN
HN	14	HELENIUM AUTUMNALE 'FUEGO'	MARIACHI™ FUEGO SNEEZEWEED	#1	CONT.	24" O.C.
SH	175	SPOROBOLUS HETEROLEPIS 'TARA'	TARA PRAIRIE DROPSEED	#1	CONT.	24" O.C.
GROUND COVERS						
AG2	156	ARONIA MELANOCARPA 'UCCONAM012'	GROUND HUG® BLACK CHOKEBERRY	#2	CONTAINER	24" o.c.
RG	41	RHUS AROMATICA 'GRO-LOW'	GRO-LOW FRAGRANT SUMAC	#1	CONTAINER	24" o.c.



- LEGEND**
- PROPERTY LINE
 - GRANITE CURB
 - LIMIT OF DISTURBANCE
 - LOAM AND SEED AT ALL DISTURBED AREAS, TYP.
 - EXISTING TREES
 - 1 TREE PIT- TYPE 1 - SEATWALL, TYP.
 - 2 TREE PIT- TYPE 2 - PLANTER, TYP.
 - 3 TREE PIT- TYPE 3 - NARROW, TYP.

Revisions:

No.	Date	Description

COA:
COPYRIGHT © 2019 BY WESTON & SAMPSON
THIS DRAWING HAS BEEN PREPARED FOR THE
EXCLUSIVE USE OF THE CLIENT & PROJECT NAME
LISTED ON THIS DRAWING ONLY.
REPRODUCTION, RELEASE OF UTILIZATION OF THE
DRAWING CONTENT BY OTHER CLIENTS / FIRMS AND
ON OTHER PROJECTS IS PROHIBITED BY LAW.
WESTON & SAMPSON RETAINS THE EXCLUSIVE USE
OF THE INTELLECTUAL PROPERTY CONTAINED
HEREIN.

Issued For:

BID SET

Scale: AS NOTED

Date: DECEMBER 13, 2024

Drawn By: DJR

Reviewed By: RRB

Approved By: RRB

W&S Project No.: ENG21-0163

W&S File No.:

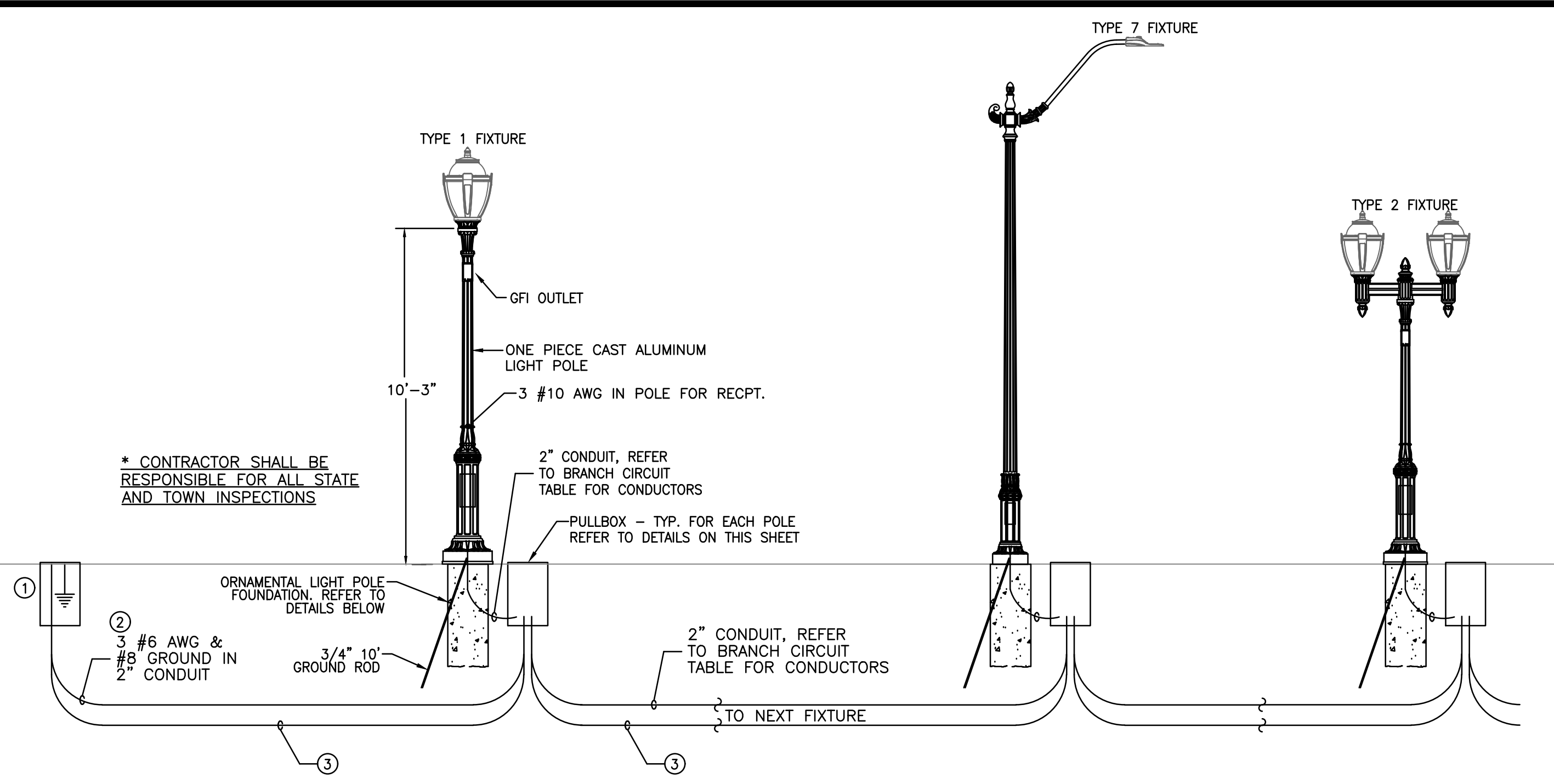
Drawing Title:

ELECTRICAL DETAILS

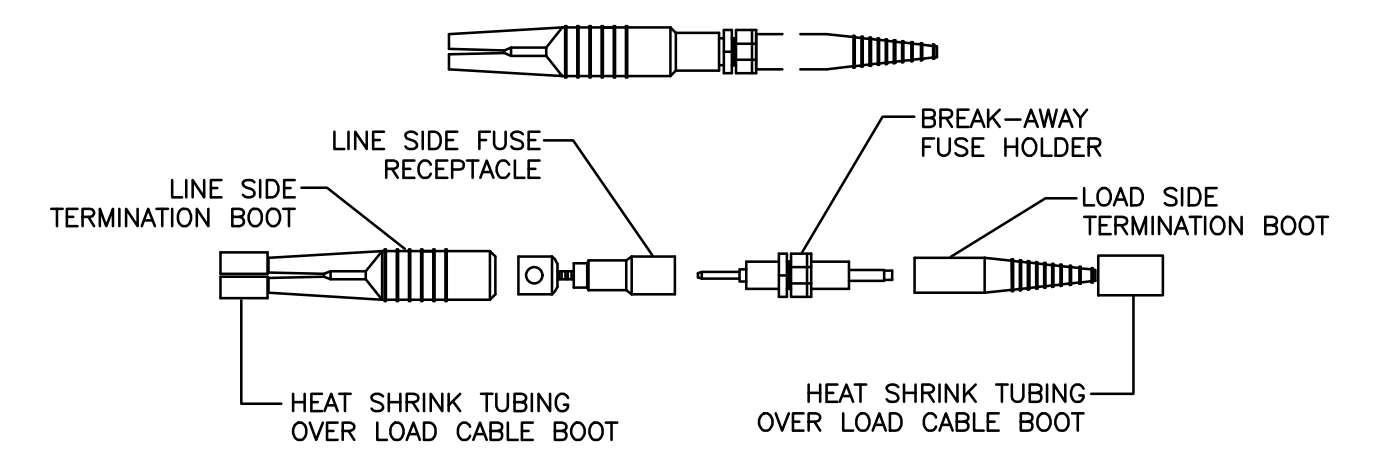
Sheet Number:

EL-5

COPYRIGHT 2019 WESTON & SAMPSON

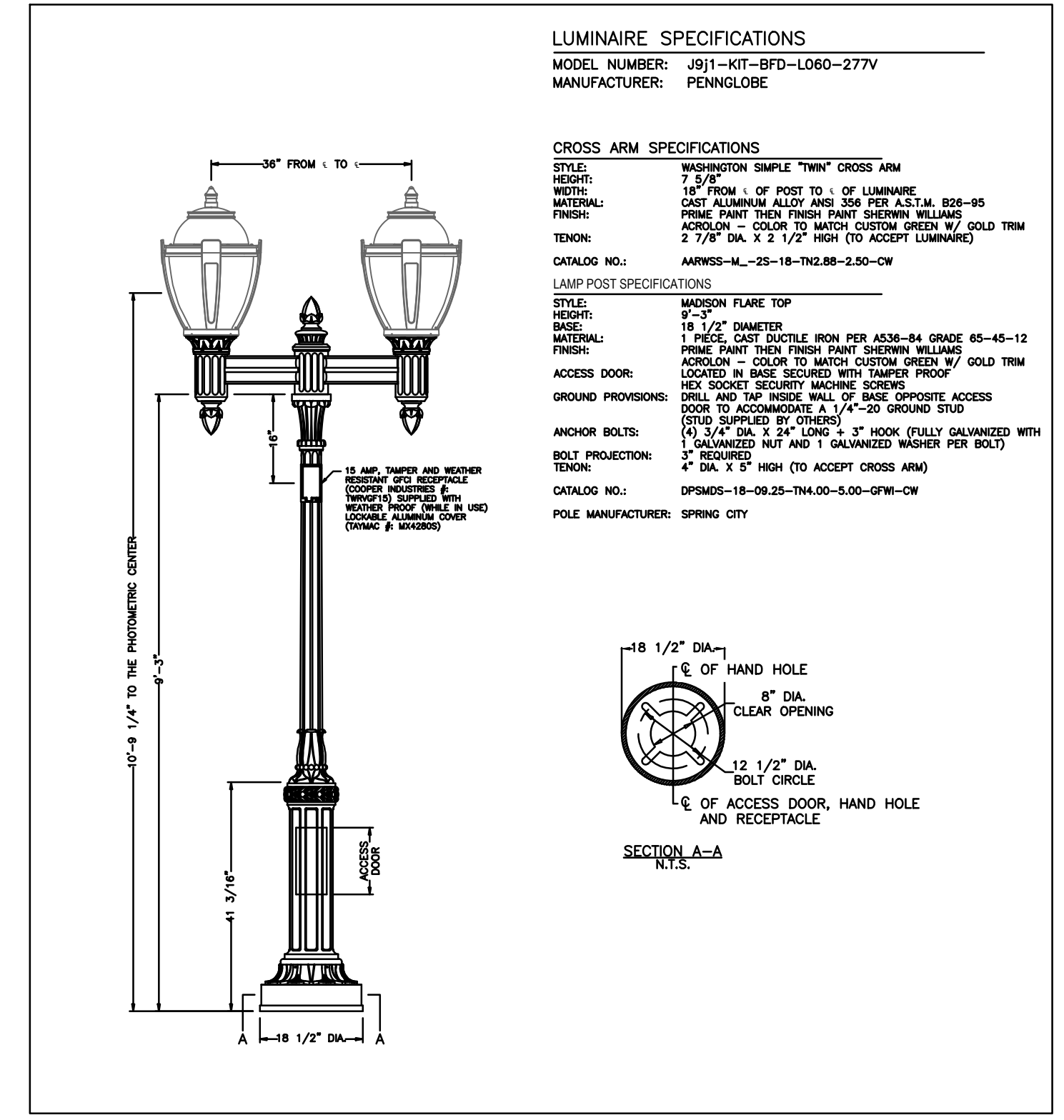


- ELECTRICAL 1-LINE DIAGRAM (TYPICAL)**
SCALE: NOT TO SCALE
- NOTES:**
- TIE TO EXISTING BRANCH CIRCUIT IN EXISTING HANDHOLE.
 - GENERAL BRANCH CIRCUIT WIRING FOR RECEPTACLE SHALL BE MINIMUM #6 AWG. REFER TO BRANCH CIRCUIT TABLE FOR LIGHTING BRANCH CIRCUIT DESIGNATION, CONDUIT SIZE, CONDUCTORS SIZE AND ADJUSTMENTS TO ALLOW FOR VOLTAGE DROP.
 - PROVIDE ONE SPARE 2" CONDUIT WITH PULLSTRING PARALLELING ALL SPECIFIED BRANCH CIRCUIT RUNS FROM SERVICE ENCLOSURES TO PULLBOXES.
- GENERAL NOTES:**
- THE CONTRACTOR SHALL COORDINATE THE INSTALLATION OF NEW LIGHTING WITH THE REMOVAL OF THE EXISTING SUCH THAT ILLUMINATION OF THE STREET IS MAINTAINED DURING CONSTRUCTION. CONTRACTOR IS RESPONSIBLE FOR REMOVAL OF ALL EXISTING ROADWAY ILLUMINATION.
 - ALL SERVICE CONDUITS SHALL BE RIGID GALVANIZED STEEL UNLESS OTHERWISE NOTED.
 - ROUTE CONDUITS TO AVOID CONFLICT WITH EXISTING AND PROPOSED STRUCTURES AND TREES.
 - LUMINAIRES UTILIZE AN IES TYPE III DISTRIBUTION, WHICH SHALL BE PARALLEL TO THE CURB LINE.
 - 6" BRACKET ARMS, LUMINAIRES, PEDESTRIAN BRACKET HANGERS, BANNER ARMS AND GFI OUTLETS SHALL BE PAID FOR UNDER ORNAMENTAL LIGHT POLE ACCESSORIES. REFER TO THE LIGHTING DETAILS AND SPECIFICATIONS FOR POLE ACCESSORY REQUIREMENTS.



BREAK-AWAY FUSE HOLDER
SCALE: NONE

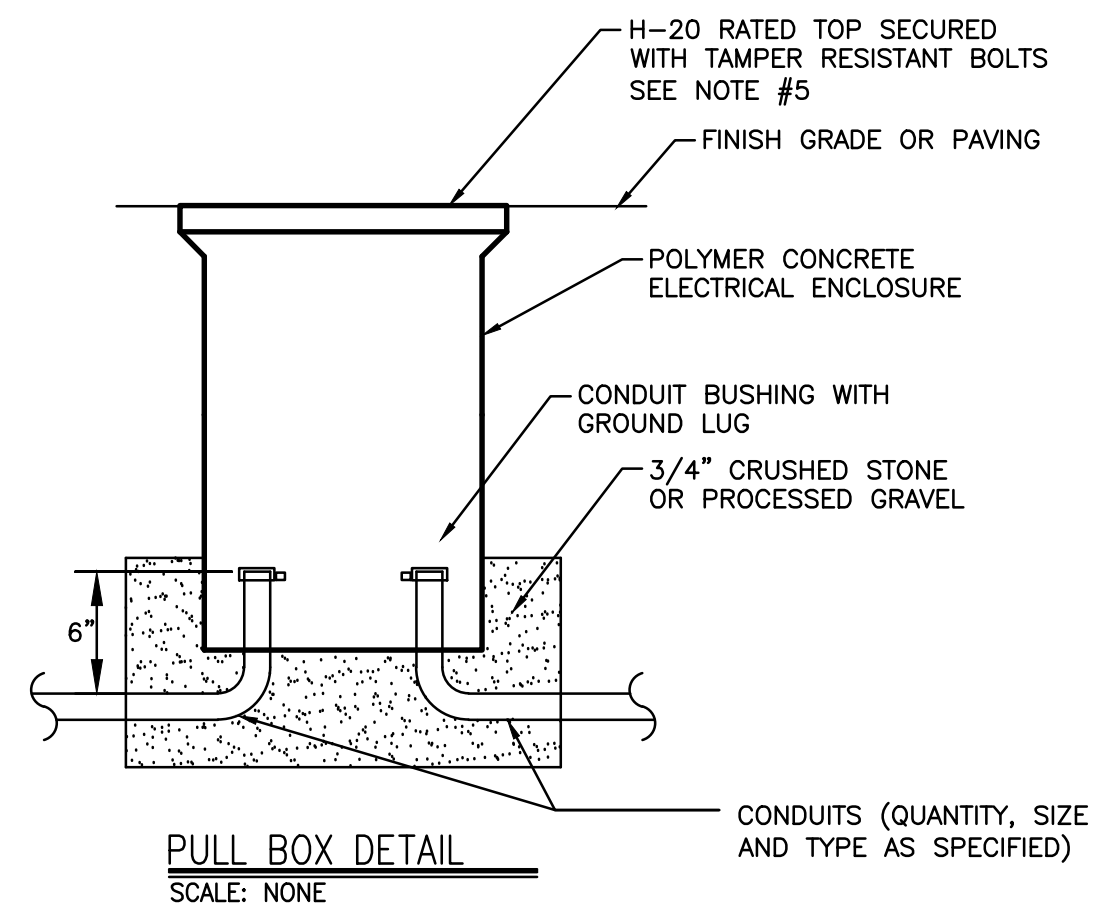
- NOTES:**
- INSTALL IN ADJACENT PULL BOX INSTEAD OF IN THE POLE WIRING COMPARTMENT.



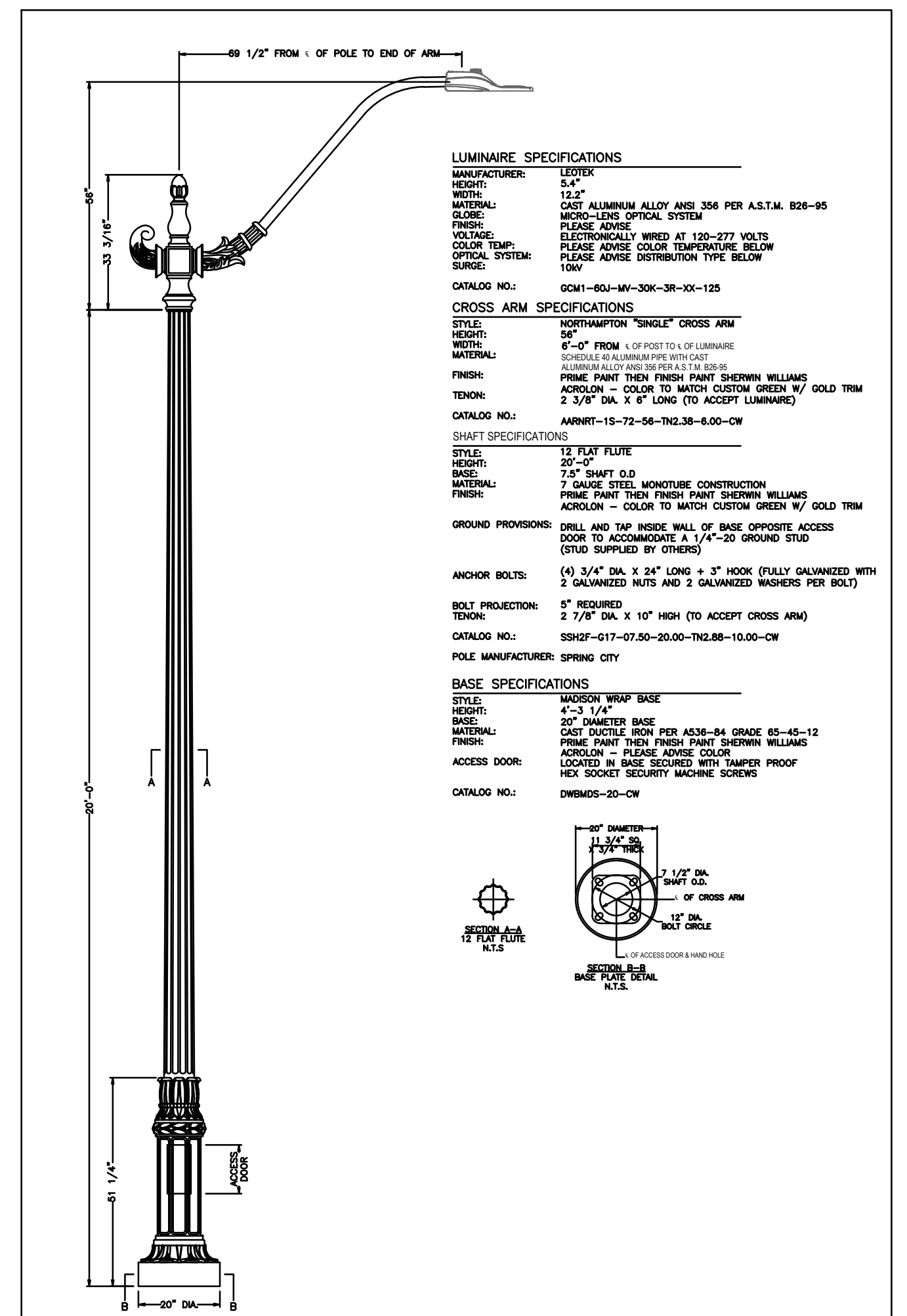
LUMINAIRE SPECIFICATIONS
MODEL NUMBER: J911-KIT-BFD-L060-277V
MANUFACTURER: PENNGLOBE

CROSS ARM SPECIFICATIONS
STYLE: NORTHAMPTON SIMPLE "TWIN" CROSS ARM
HEIGHT: 2 1/2"
WIDTH: 18" FROM 1/2" OF POST TO 1/2" OF LUMINAIRE
MATERIAL: CAST ALUMINUM ALLOY ANSI 356 PER A.S.T.M. B26-95
FINISH: PRIME PAINT THEN FINISH PAINT SHERWIN WILLIAMS ACRYLON - COLOR TO MATCH CUSTOM GREEN W/ GOLD TRIM
TENDON: 2 7/8" DIA. X 2 1/2" HIGH (TO ACCEPT LUMINAIRE)

LAMP POST SPECIFICATIONS
STYLE: MADISON FLARE TOP
HEIGHT: 10'-3"
BASE: 18 1/2" DIAMETER
MATERIAL: 1 PIECE CAST DUCTILE IRON PER A536-84 GRADE 65-45-12
FINISH: PRIME PAINT THEN FINISH PAINT SHERWIN WILLIAMS ACRYLON - COLOR TO MATCH CUSTOM GREEN W/ GOLD TRIM
ACCESS DOOR: LOCATED IN BASE SECURED WITH TAMPER PROOF HEX SOCKET SECURITY MACHINE SCREWS
GROUND PROVISIONS: DRILL AND TAP INSIDE WALL OF BASE OPPOSITE ACCESS DOOR TO ACCOMMODATE A 1/4"-20 GROUND STUD (STUD SUPPLIED BY OTHERS)
ANCHOR BOLTS: (4) 3/4" DIA. X 2 1/4" LONG X 3" HOOK FULLY GALVANIZED WITH 2 GALVANIZED NUTS AND 1 GALVANIZED WASHER PER BOLT
BOLT PROJECTION: 3" REQUIRED
TENDON: 2 7/8" DIA. X 2 1/2" HIGH (TO ACCEPT CROSS ARM)
CATALOG NO.: DPSMDS-18-09-25-TN2-88-2.50-CW
POLE MANUFACTURER: SPRING CITY



- NOTES:**
- PULLBOXES SHALL BE SET ON A 12" BED OF COMPACTED CRUSHED STONE OR PROCESSED GRAVEL. BED SHALL EXTEND 6" BEYOND EACH WALL (i.e. 13"x24" BOX, PAD SHALL BE 25"x36"). THE EXTERIOR OF THE BOTTOM BOX SHALL BE BACKFILLED WITH 12" OF COMPACTED BED MATERIAL.
 - PULLBOXES SHALL BE OPEN BOTTOM TYPE, WITH NOMINAL DIMENSION OF 19"W x 32"L x 30"D WITH A 1 1/4" BOTTOM EDGE. TOP SHALL BE DESIGNED WITH BOLT HOLES, PULL SLOT AND CUSTOM LOGO. BOX COLOR SHALL BE SELECTED FROM MANUFACTURER'S STANDARD COLORS. PULLBOXES SHALL BE UL LISTED H-20. HAND HOLE COVERS SHALL BE SECURED WITH STAINLESS STEEL PENTA-HEAD BOLTS.
 - PROVIDE PRODUCT DATA SHEETS, WHICH INDICATE DIMENSIONS, DESIGN INFORMATION, LOAD RATING DATA, MATERIAL INFORMATION, ALONG WITH MANUFACTURER'S INFORMATION FOR REVIEW. SUBMIT PRODUCT SAMPLES, IN MANUFACTURER'S STANDARD COLORS TO ALLOW FOR COLOR SELECTION. PRODUCT SAMPLES SHALL HAVE NOMINAL DIMENSIONS OF 4"x6".
 - WHERE REQUIRED, CONTRACTOR SHALL FIELD DRILL PULLBOXES TO INSTALL CONDUITS FOR LIGHT POLES. AFTER INSTALLATION OF CONDUIT, HOLES SHALL BE SEALED, USING MATERIALS AS RECOMMENDED BY THE PULLBOX MANUFACTURER.
 - LOGO FOR TOP SHALL BE "BRANFORD LIGHTING" OR "BRANFORD TRAFFIC" AS APPROPRIATE IN 2" HIGH LETTERS. PROVIDE A FULL SIZE SAMPLE FOR REVIEW.

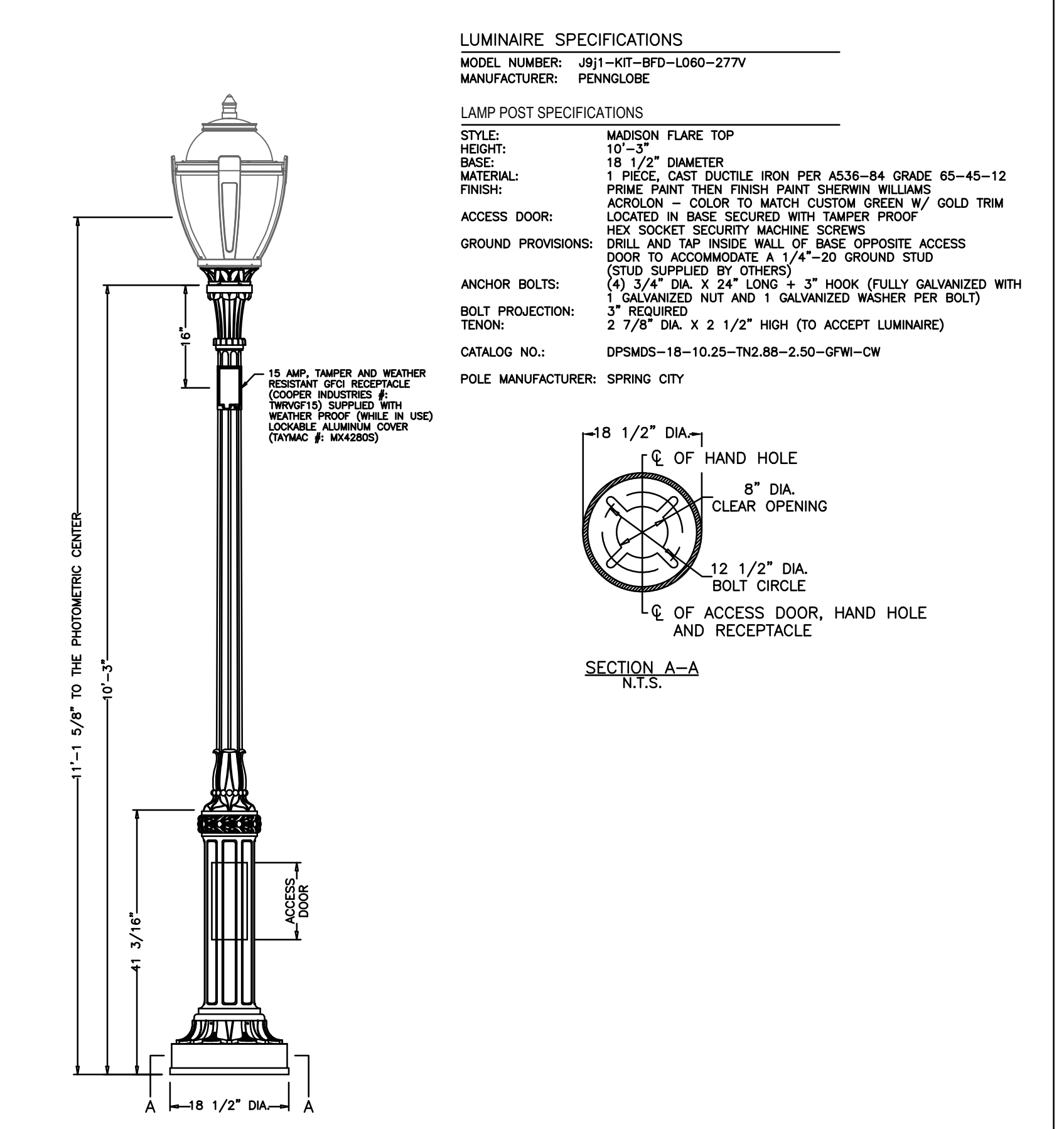


LUMINAIRE SPECIFICATIONS
MODEL NUMBER: J911-KIT-BFD-L060-277V
MANUFACTURER: PENNGLOBE

CROSS ARM SPECIFICATIONS
STYLE: NORTHAMPTON "SINGLE" CROSS ARM
HEIGHT: 20"
WIDTH: 8"-0" FROM 1/2" OF POST TO 1/2" OF LUMINAIRE
MATERIAL: CAST ALUMINUM ALLOY ANSI 356 PER A.S.T.M. B26-95
FINISH: PRIME PAINT THEN FINISH PAINT SHERWIN WILLIAMS ACRYLON - COLOR TO MATCH CUSTOM GREEN W/ GOLD TRIM
TENDON: 2 7/8" DIA. X 2 1/2" HIGH (TO ACCEPT LUMINAIRE)
CATALOG NO.: ANWNT-15-72-56-TN2-38-4.00-CW

SHAFT SPECIFICATIONS
STYLE: 18" FLARE FLUTE
HEIGHT: 20'-0"
BASE: 18 1/2" DIA.
MATERIAL: 7 GAUGE STEEL MONITORED CONSTRUCTION
FINISH: PRIME PAINT THEN FINISH PAINT SHERWIN WILLIAMS ACRYLON - COLOR TO MATCH CUSTOM GREEN W/ GOLD TRIM
GROUND PROVISIONS: DRILL AND TAP INSIDE WALL OF BASE OPPOSITE ACCESS DOOR TO ACCOMMODATE A 1/4"-20 GROUND STUD (STUD SUPPLIED BY OTHERS)
ANCHOR BOLTS: (4) 3/4" DIA. X 2 1/4" LONG X 3" HOOK FULLY GALVANIZED WITH 2 GALVANIZED NUTS AND 2 GALVANIZED WASHERS PER BOLT
BOLT PROJECTION: 3" REQUIRED
TENDON: 2 7/8" DIA. X 10" HIGH (TO ACCEPT CROSS ARM)
CATALOG NO.: SSIQF-617-07-50-20.00-TN2-88-10.00-CW
POLE MANUFACTURER: SPRING CITY

BASE SPECIFICATIONS
STYLE: MADISON WRAP BASE
HEIGHT: 4'-3"
BASE: 20" DIAMETER
MATERIAL: 1 PIECE CAST DUCTILE IRON PER A536-84 GRADE 65-45-12
FINISH: PRIME PAINT THEN FINISH PAINT SHERWIN WILLIAMS ACRYLON - COLOR TO MATCH CUSTOM GREEN W/ GOLD TRIM
ACCESS DOOR: LOCATED IN BASE SECURED WITH TAMPER PROOF HEX SOCKET SECURITY MACHINE SCREWS
CATALOG NO.: DPSMDS-20-CW



LUMINAIRE SPECIFICATIONS
MODEL NUMBER: J911-KIT-BFD-L060-277V
MANUFACTURER: PENNGLOBE

LAMP POST SPECIFICATIONS
STYLE: MADISON FLARE TOP
HEIGHT: 10'-3"
BASE: 18 1/2" DIAMETER
MATERIAL: 1 PIECE CAST DUCTILE IRON PER A536-84 GRADE 65-45-12
FINISH: PRIME PAINT THEN FINISH PAINT SHERWIN WILLIAMS ACRYLON - COLOR TO MATCH CUSTOM GREEN W/ GOLD TRIM
ACCESS DOOR: LOCATED IN BASE SECURED WITH TAMPER PROOF HEX SOCKET SECURITY MACHINE SCREWS
GROUND PROVISIONS: DRILL AND TAP INSIDE WALL OF BASE OPPOSITE ACCESS DOOR TO ACCOMMODATE A 1/4"-20 GROUND STUD (STUD SUPPLIED BY OTHERS)
ANCHOR BOLTS: (4) 3/4" DIA. X 2 1/4" LONG X 3" HOOK FULLY GALVANIZED WITH 2 GALVANIZED NUTS AND 1 GALVANIZED WASHER PER BOLT
BOLT PROJECTION: 3" REQUIRED
TENDON: 2 7/8" DIA. X 2 1/2" HIGH (TO ACCEPT LUMINAIRE)
CATALOG NO.: DPSMDS-18-10-25-TN2-88-2.50-GFW-CW
POLE MANUFACTURER: SPRING CITY

CALL BEFORE YOU DIG
1-800-922-4455 OR 811
CALL NO LESS THAN TWO FULL WORKING DAYS AND NO MORE THAN 30 DAYS PRIOR TO START OF EXCAVATION MONDAY THRU FRIDAY, 7AM TO 5PM

2/24/2025, 10:15 AM: User: Admin, Project: BranfordMainStreet, Drawing: EL-5, Detail: Electrical Details